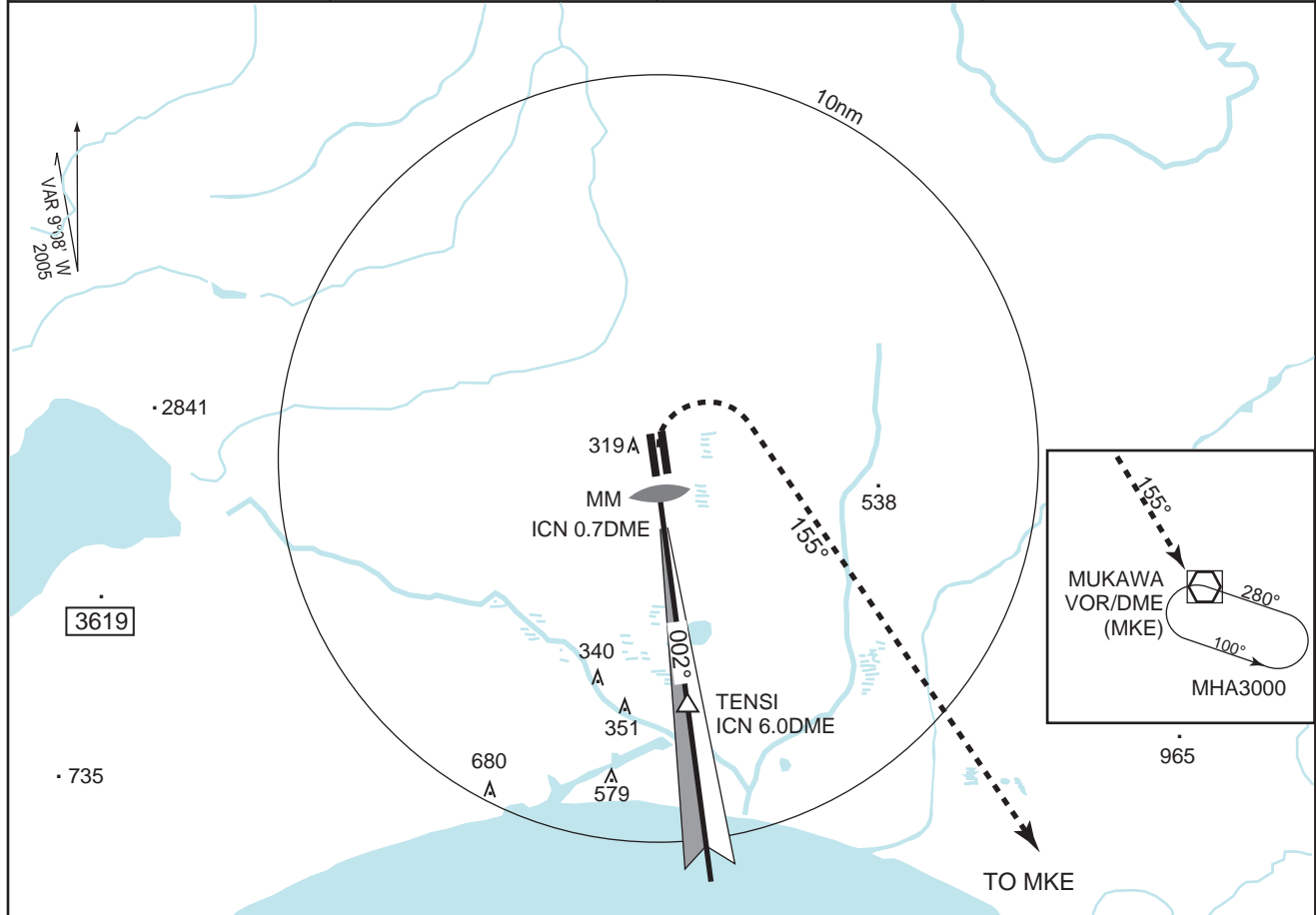


RJCC

NEW CHITOSE ILS NR.1 RWY 01L

CHITOSE APP 120.1 - 124.7	ILS-LLZ 110.9 ICN ILS-GP 330.8 ILS-DME CH-46	CHITOSE TOWER 118.8 - 126.2 - 121.6G	RADAR AVAILABLE ATIS 128.6
------------------------------	---	---	-------------------------------



**MISSED APPROACH**  
 At DA, climb to 500' on 002°, then turn right, climb via MKE R-335 to 5000' , proceed to MKE VOR/DME and hold.  
 Contact CHITOSE APP.

**ILS REFERENCE DATUM 54'**

The diagram illustrates the missed approach procedure starting from the ILS reference datum (54' AGL). The aircraft climbs on a 002° heading to 500' AGL, then turns right to 155° and continues to climb. A secondary path is shown at 002° heading, passing through the Tensi marker (6.0 DME) and the VDP (GP OUT) at 0.6 DME. The final approach path is at 002° heading, passing through the MM marker (0.7 DME) and the VDP (GP OUT) at 0.6 DME. The MUKAWA VOR/DME (MKE) is located at 20 DME. The YUKII VOR/DME (YUKII) is also shown at 20 DME. The VDP (GP OUT) is at 1500' (GP OUT) and 2000' (GP OUT).

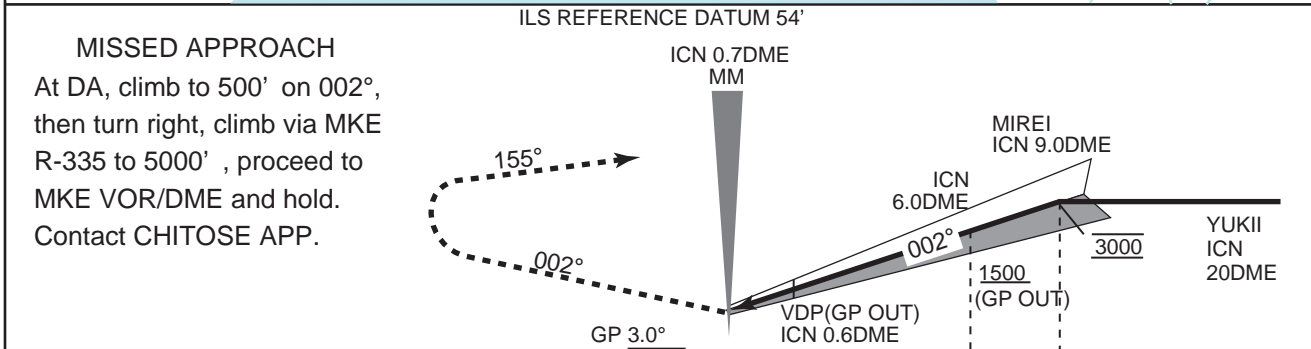
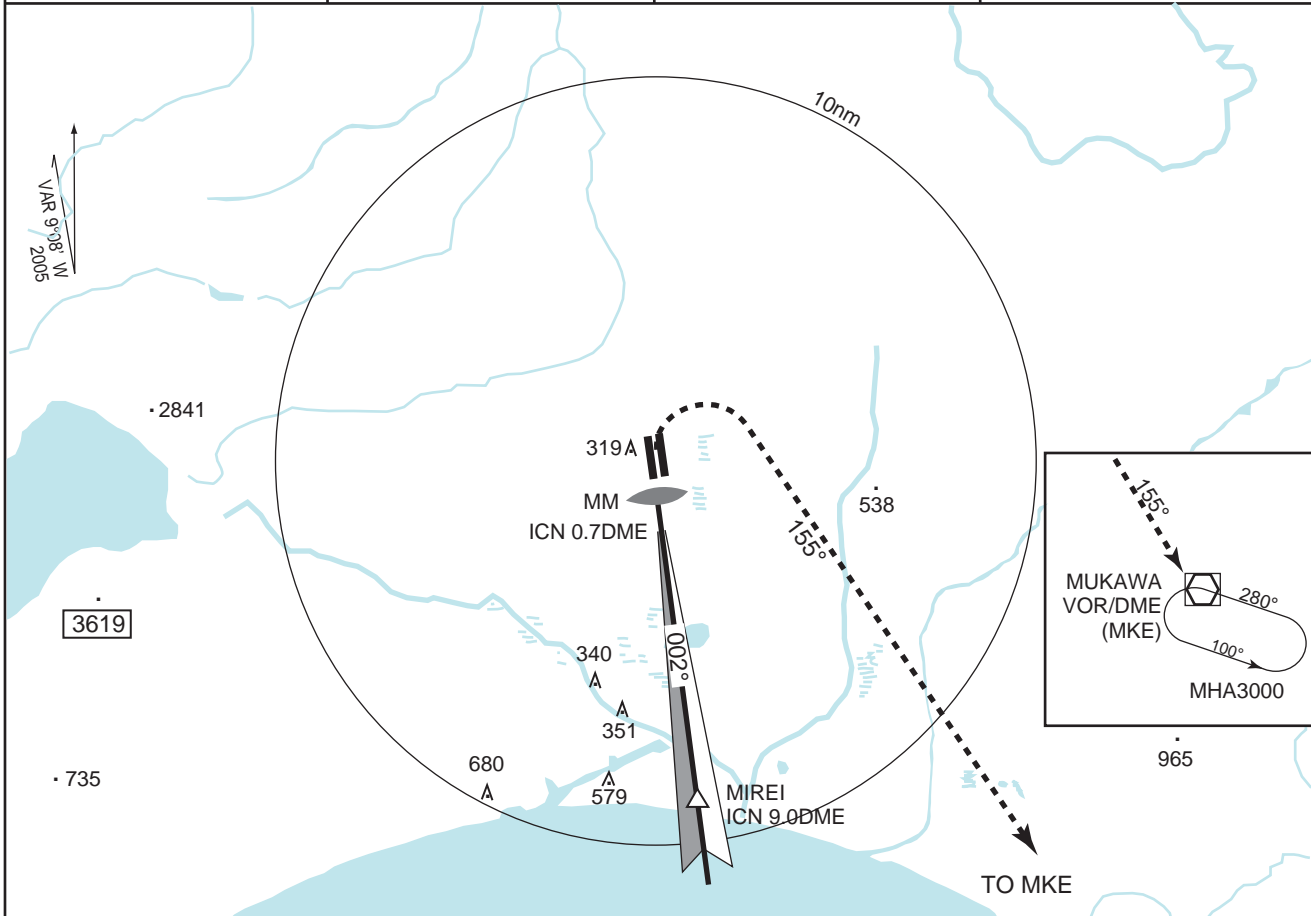
MINIMA		FIELD ELEV 70ft TDZ ELEV 68ft			
STA TO RWY 01R			(GP OUT)		CIRCLING*
ILS DA 268'			MDA 520'		
RTZL & RCLL AVBL	RTZL &/or RCLL OUT	PALS OUT	PALS AVBL	PALS OUT	MDA-VIS
A				RVR 1400m VIS 1400m	580' -1600m
B	RVR 550m VIS 800m	RVR 800m VIS 800m	RVR 1200m VIS 1200m	RVR 1200m VIS 1200m	580' -2400m
C				VIS 1700m	580' -2400m
D				VIS 2400m	640' -3200m

\*Circling to East side of RWY only

RJCC

NEW CHITOSE ILS NR.2 RWY 01L

CHITOSE APP 120.1 - 124.7	ILS-LLZ 110.9 ICN ILS-GP 330.8 ILS-DME CH-46	CHITOSE TOWER 118.8 - 126.2 - 121.6G	RADAR AVAILABLE ATIS 128.6
------------------------------	---	---	-------------------------------



MINIMA	FIELD ELEV 70ft TDZ ELEV 68ft
--------	----------------------------------

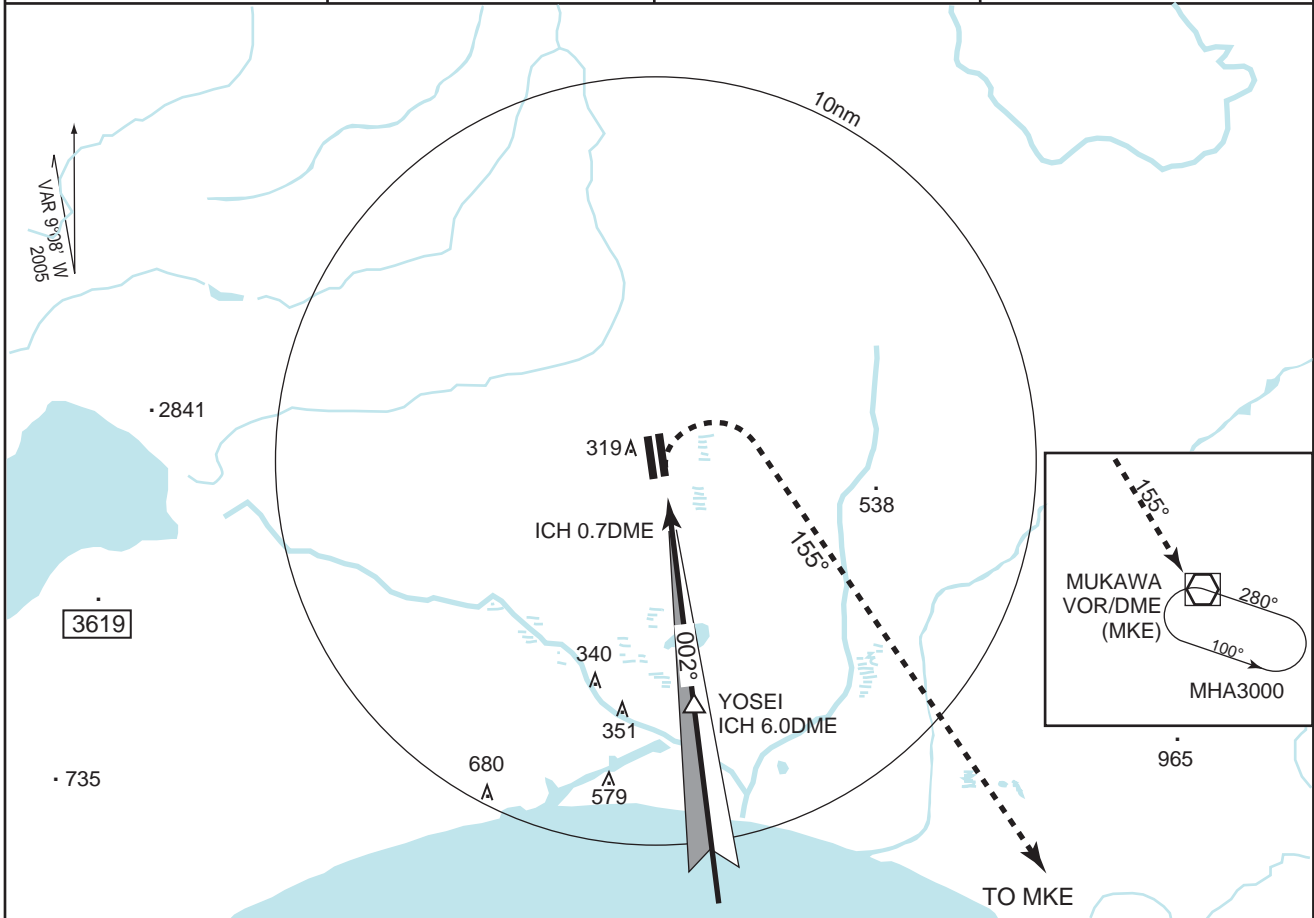
	STA TO RWY 01L				CIRCLING*	
	ILS		(GP OUT)			
	DA 268'		MDA 520'			
	RTZL & RCLL AVBL	RTZL &/or RCLL OUT	PALS OUT	PALS AVBL	PALS OUT	MDA-VIS
A						
B	RVR 550m VIS 800m	RVR 800m VIS 800m	RVR 1200m VIS 1200m	RVR 1200m VIS 1200m	RVR 1400m VIS 1400m	580' -1600m
C					VIS 1700m	580' -2400m
D					VIS 2400m	640' -3200m

\*Circling to East side of RWY only

RJCC

NEW CHITOSE ILS NR.3 RWY 01R

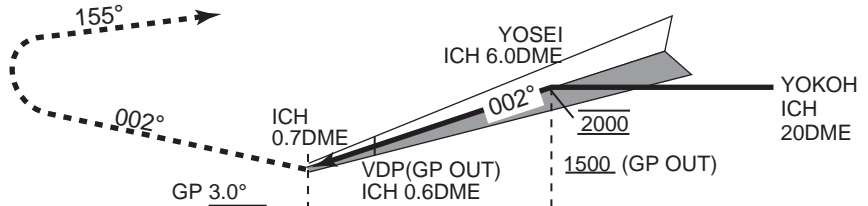
CHITOSE APP 120.1 - 124.7	ILS-LLZ 110.75 ICH ILS-GP 330.05 ILS-DME CH-44Y	CHITOSE TOWER 118.8 - 126.2 - 121.6G	RADAR AVAILABLE ATIS 128.6
------------------------------	--	---	-------------------------------



ILS REFERENCE DATUM 54'

**MISSED APPROACH**

At DA, climb to 500' on 002°, then turn right, climb via MKE R-335 to 5000' , proceed to MKE VOR/DME and hold. Contact CHITOSE APP.



**MINIMA**

FIELD ELEV 70ft  
TDZ ELEV 63ft

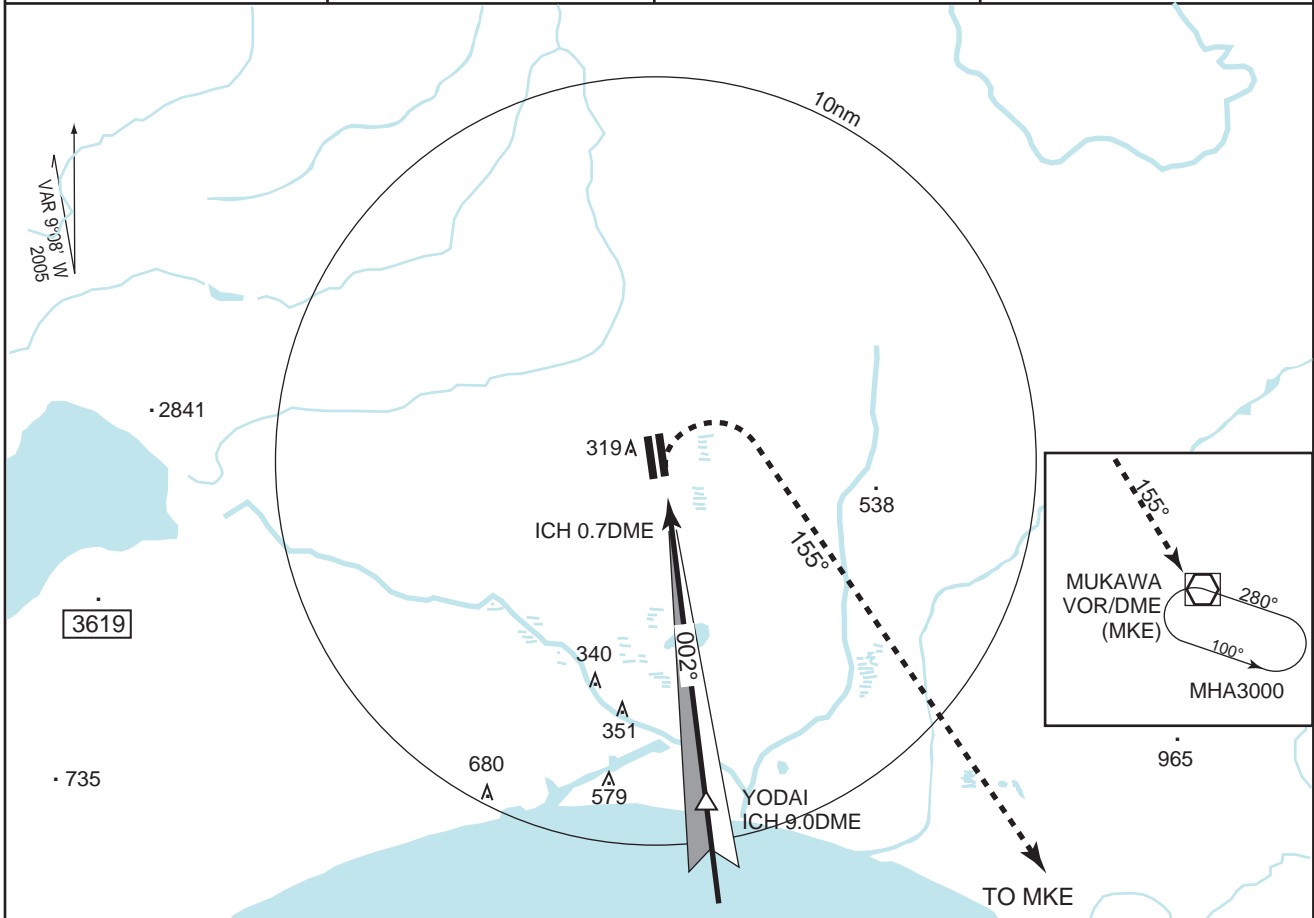
	STA TO RWY 01R					CIRCLING*
	ILS			(GP OUT)		
	DA 263'			MDA 520'		
	RTZL & RCLL AVBL	RTZL &/or RCLL OUT	PALS OUT	PALS AVBL	PALS OUT	MDA-VIS
A					RVR 1400m VIS 1400m	580' -1600m
B	RVR 550m VIS 800m	RVR 800m VIS 800m	RVR 1200m VIS 1200m	RVR 1200m VIS 1200m	VIS 1700m	580' -2400m
C					VIS 2400m	640' -3200m
D						

\*Circling to East side of RWY only

RJCC

NEW CHITOSE ILS NR.4 RWY 01R

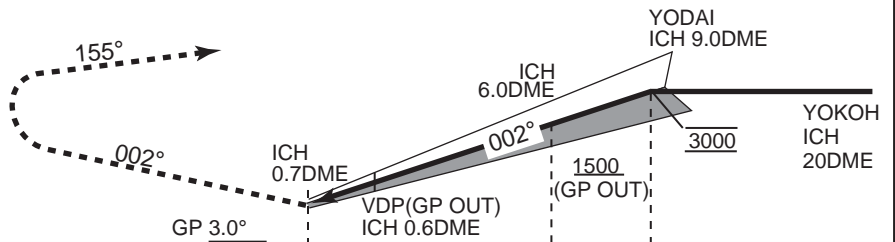
CHITOSE APP 120.1 - 124.7	ILS-LLZ 110.75 ICH ILS-GP 330.05 ILS-DME CH-44Y	CHITOSE TOWER 118.8 - 126.2 - 121.6G	RADAR AVAILABLE ATIS 128.6
------------------------------	--	---	-------------------------------



ILS REFERENCE DATUM 54'

**MISSED APPROACH**

At DA, climb to 500' on 002°, then turn right, climb via MKE R-335 to 5000' , proceed to MKE VOR/DME and hold. Contact CHITOSE APP.



**MINIMA**

FIELD ELEV 70ft  
TDZ ELEV 63ft

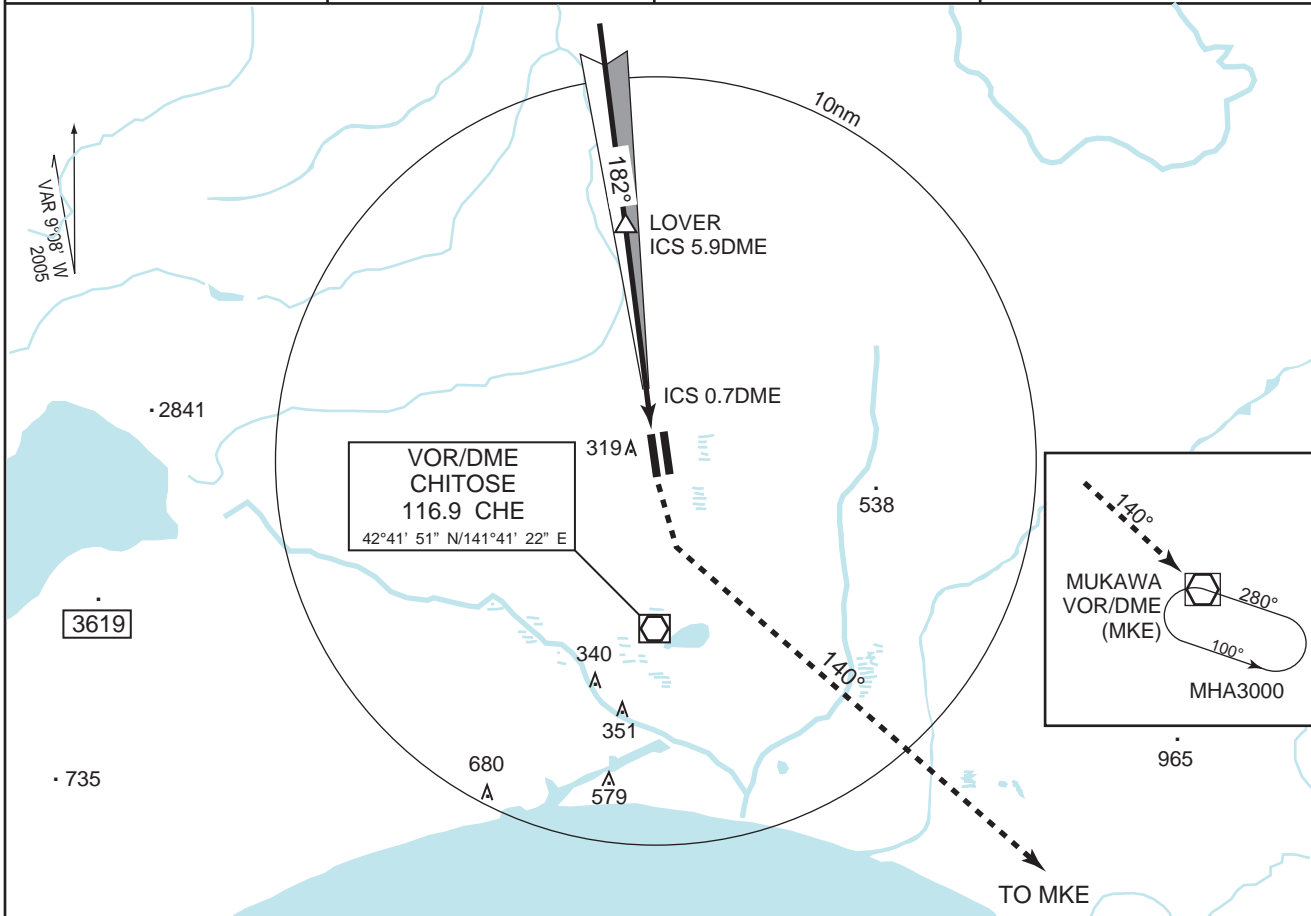
	STA TO RWY 01R					CIRCLING*
	ILS			(GP OUT)		
	DA 263'			MDA 520'		
	RTZL & RCLL AVBL	RTZL &/or RCLL OUT	PALS OUT	PALS AVBL	PALS OUT	MDA-VIS
A					RVR 1400m VIS 1400m	580' -1600m
B	RVR 550m VIS 800m	RVR 800m VIS 800m	RVR 1200m VIS 1200m	RVR 1200m VIS 1200m	VIS 1700m	580' -2400m
C					VIS 2400m	640' -3200m

\*Circling to East side of RWY only

RJCC

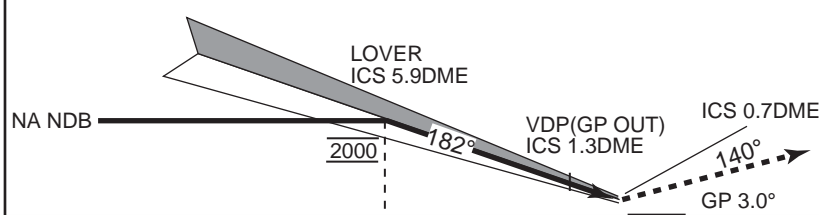
NEW CHITOSE ILS NR.5 RWY 19R

CHITOSE APP 120.1 - 124.7	ILS-LLZ 111.5 ICS ILS-GP 332.9	CHITOSE TOWER 118.8 - 126.2 - 121.6G	RADAR AVAILABLE ATIS 128.6
------------------------------	--------------------------------------	---	-------------------------------



ILS REFERENCE DATUM 54'

**MISSED APPROACH**  
At DA, climb to 500' on 182°, then turn left, climb via MKE R-320 to 5000' , proceed to MKE VOR/DME and hold. Contact CHITOSE APP.



MINIMA	FIELD ELEV 70ft TDZ ELEV 82ft
--------	----------------------------------

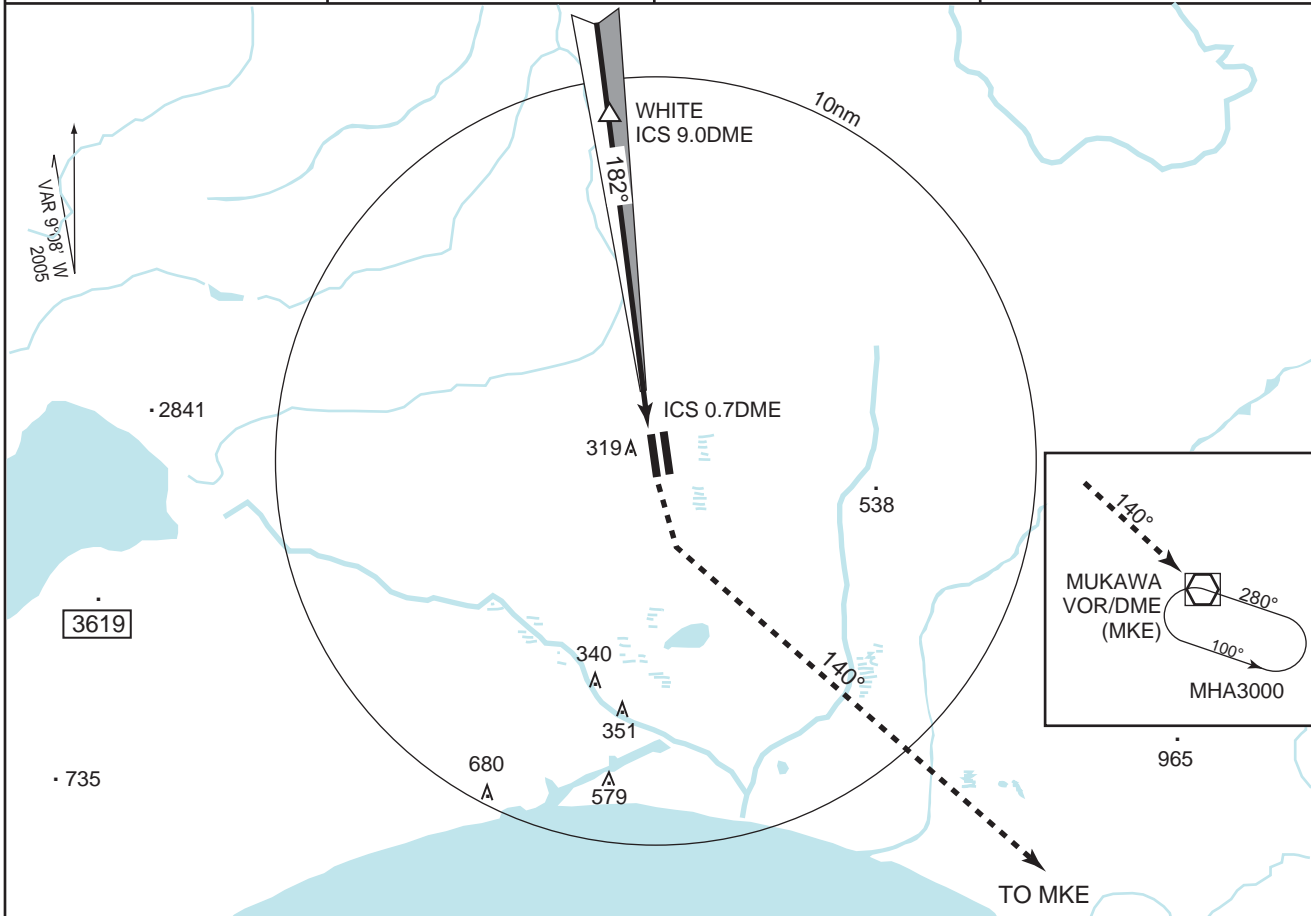
	STA TO RWY 01R					CIRCLING* MDA-VIS
	ILS			(GP OUT)		
	RTZL & RCLL AVBL	RTZL &/or RCLL OUT	PALS OUT	PALS AVBL	PALS OUT	
A					RVR 1400m VIS 1400m	580' -1600m
B	RVR 550m VIS 800m	RVR 800m VIS 800m	RVR 1200m VIS 1200m	RVR 1200m VIS 1200m	RVR1600m VIS 1600m	580' -2400m
C					VIS 2400m	640' -3200m
D						

\*Circling to East side of RWY only

RJCC

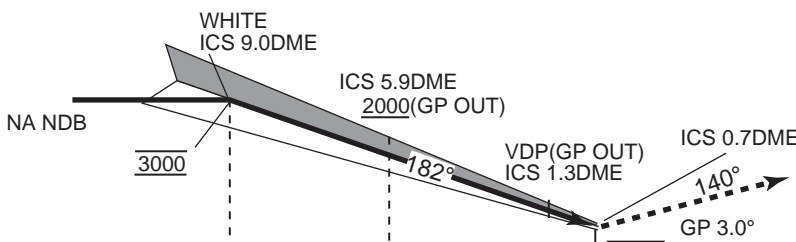
NEW CHITOSE ILS NR.6 RWY 19R

CHITOSE APP 120.1 - 124.7	ILS-LLZ 111.5 ICS ILS-GP 332.9	CHITOSE TOWER 118.8 - 126.2 - 121.6G	RADAR AVAILABLE ATIS 128.6
------------------------------	--------------------------------------	---	-------------------------------



ILS REFERENCE DATUM 54'

**MISSED APPROACH**  
At DA, climb to 500' on 182°, then turn left, climb via MKE R-320 to 5000' , proceed to MKE VOR/DME and hold. Contact CHITOSE APP.



MINIMA

FIELD ELEV 70ft  
TDZ ELEV 82ft

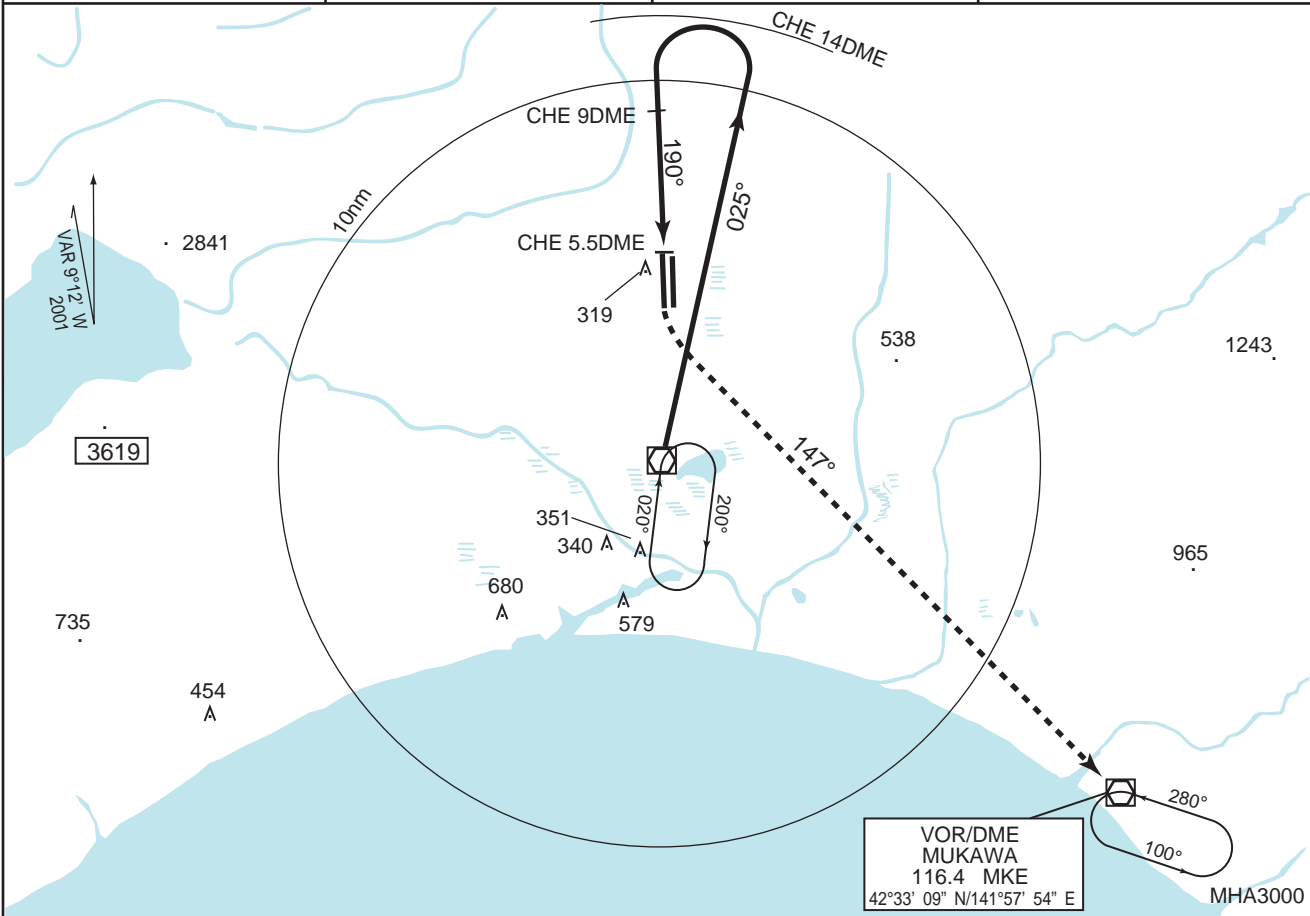
	STA TO RWY 19R					CIRCLING*
	ILS			(GP OUT)		
	RTZL & RCLL AVBL	RTZL &/or RCLL OUT	PALS OUT	PALS AVBL	PALS OUT	
						MDA-VIS
A					RVR 1400m VIS 1400m	580' -1600m
B	RVR 550m VIS 800m	RVR 800m VIS 800m	RVR 1200m VIS 1200m	RVR 1200m VIS 1200m	RVR 1600m VIS 1600m	580' -2400m
C					VIS 2400m	640' -3200m
D						

\*Circling to East side of RWY only

RJCC

NEW CHITOSE VOR/DME RWY 19R

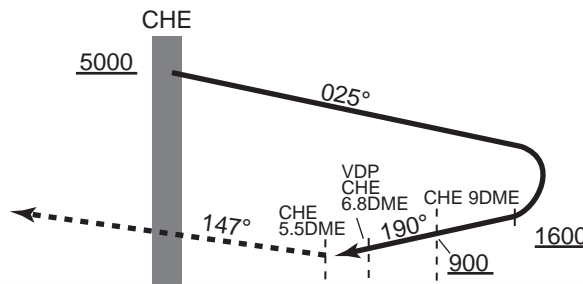
CHITOSE APP 120.1 - 124.7	CHITOSE VOR/DME 116.9 CHE 42°41' 51" N/141°41' 22" E	CHITOSE TOWER 118.8 - 126.2 - 121.6G	RADAR AVAILABLE ATIS 128.6
------------------------------	--	---	-------------------------------



**MISSED APPROACH**

Remain within CHE 14DME

At 5.5DME prior to CHE VOR/DME, turn left climb via MKE R-327 to 5000' , proceed to MKE VOR/DME and hold.  
Contact CHITOSE APP.



**MINIMA**

FIELD ELEV 70ft

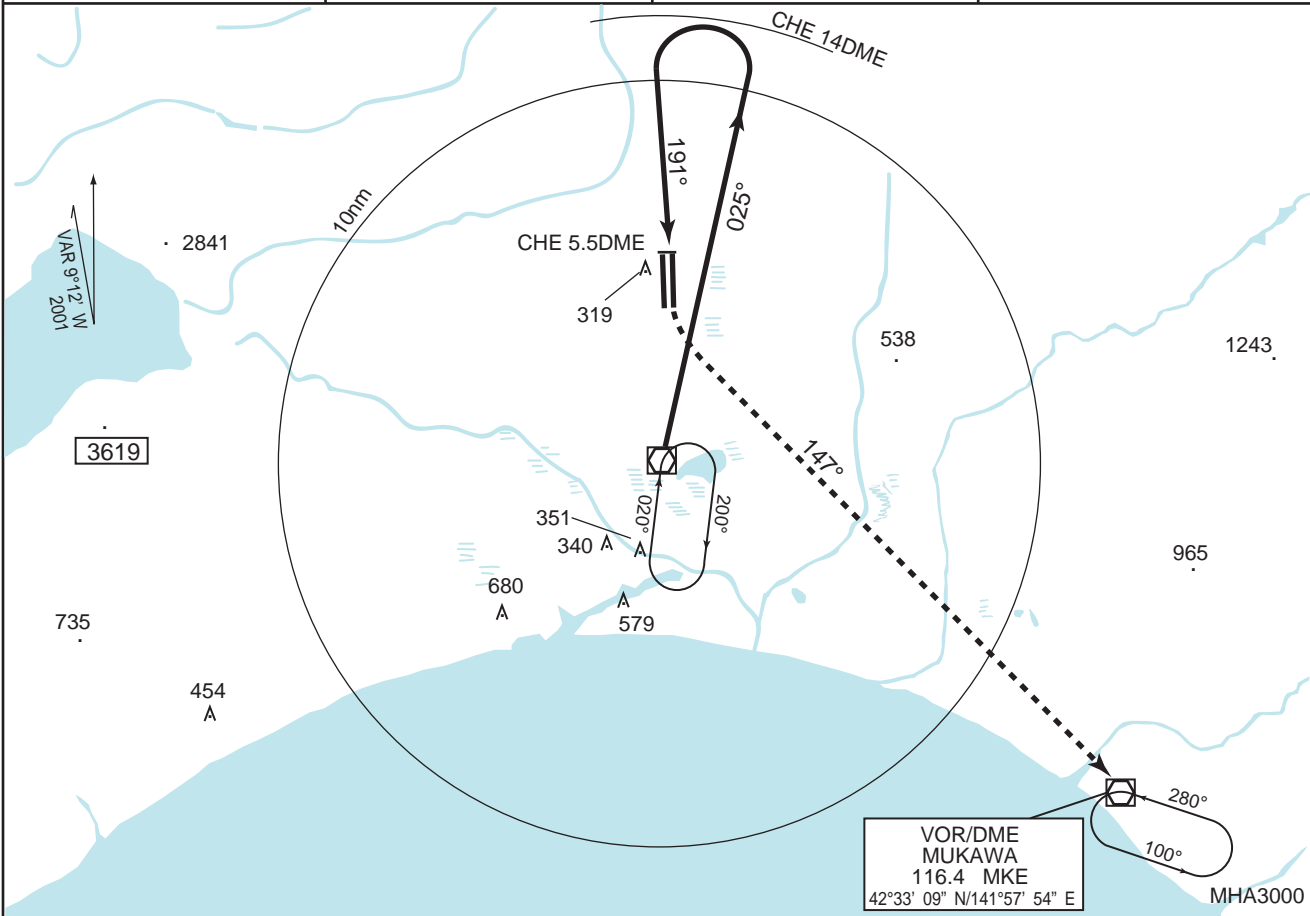
	STA TO RWY 19R MDA 620'		CIRCLING* MDA-VIS
	PALS AVBL	PALS OUT	
A	RVR 1200m VIS 1200m	RVR 1600m VIS 1600m	620' -1600m
B		VIS 1700m	620' -1700m
C		VIS 2200m	620' -2400m
D		VIS 3000m	620' -3200m

\*Circling to East side of RWY only

RJCC

NEW CHITOSE VOR/DME NR.1 RWY 19L

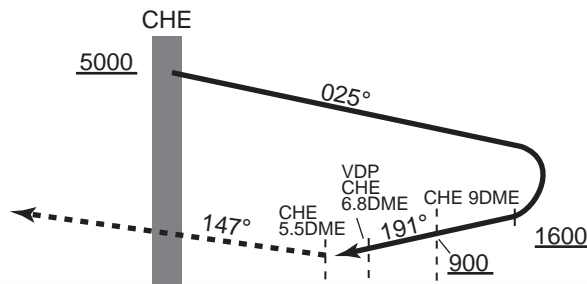
CHITOSE APP 120.1 - 124.7	CHITOSE VOR/DME 116.9 CHE 42°41' 51" N/141°41' 22" E	CHITOSE TOWER 118.8 - 126.2 - 121.6G	RADAR AVAILABLE ATIS 128.6
------------------------------	--	---	-------------------------------



**MISSED APPROACH**

Remain within CHE 14DME

At 5.5DME prior to CHE VOR/DME, turn left climb via MKE R-327 to 5000', proceed to MKE VOR/DME and hold. Contact CHITOSE APP.



**MINIMA**

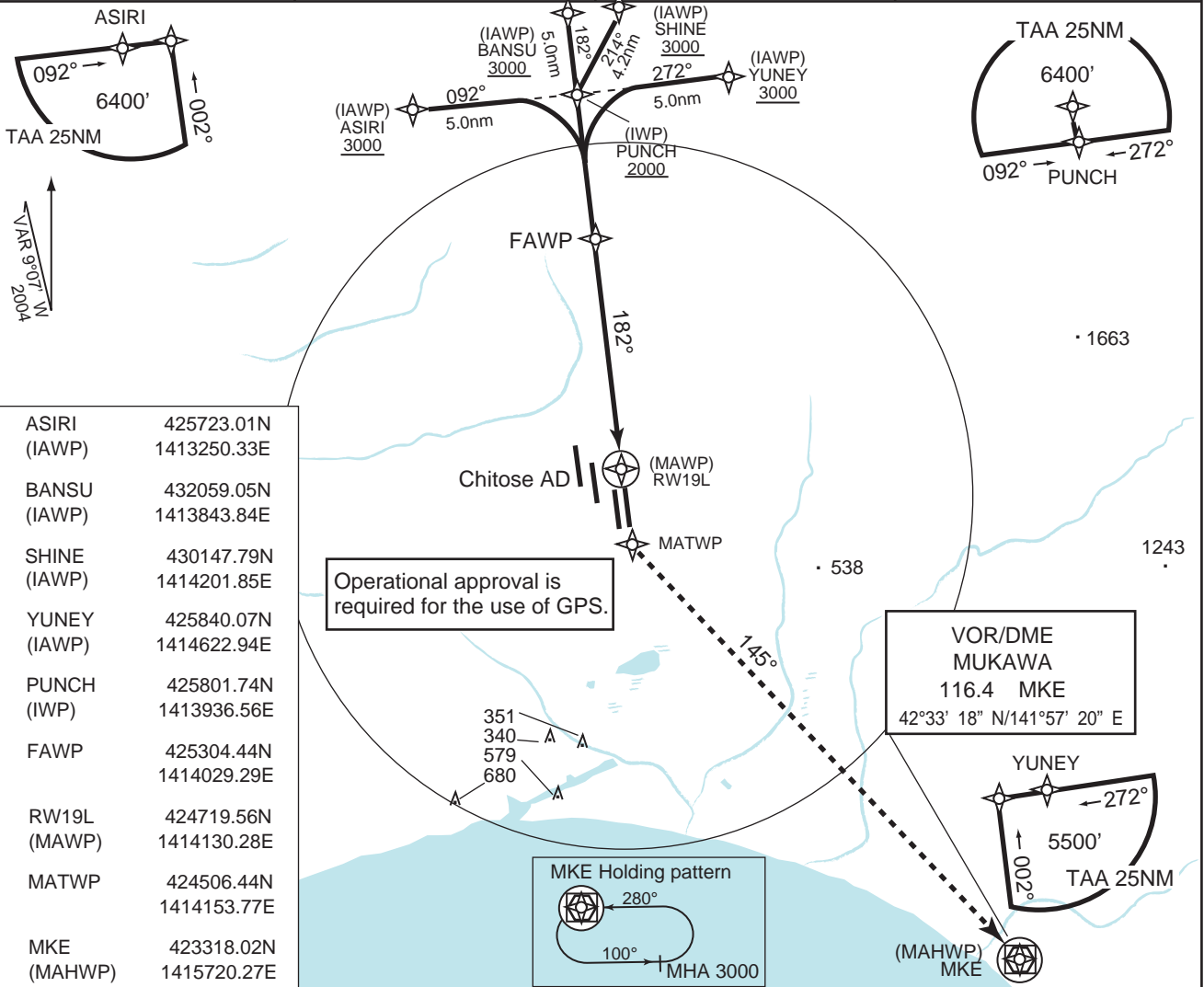
FIELD ELEV 70ft

	STA TO RWY 19L MDA 620'			CIRCLING* MDA-VIS
	SALS & ALB AVBL	SALS ONLY AVBL	SALS & ALB OUT	
A	VIS 1400m	VIS 1400m	VIS 1600m	620' -1600m
B			VIS 1700m	620' -1700m
C	VIS 1700m	VIS 1900m	VIS 2200m	620' -2400m
D	VIS 2500m	VIS 2700m	VIS 3000m	620' -3200m

\*Circling to East side of RWY only



<b>CHITOSE APP</b> 120.1 - 124.7	1. GPS required. 2. DME/DME not authorized. 3. RADAR service required.	<b>CHITOSE TOWER</b> 118.8 - 126.2 - 121.6G	<b>RADAR AVAILABLE</b> ATIS 128.6
-------------------------------------	--	--	--------------------------------------

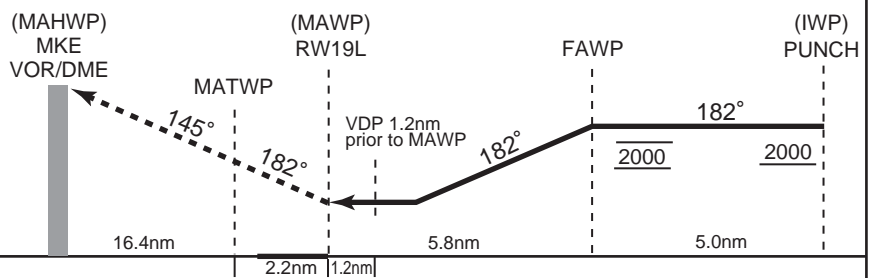


**MISSED APPROACH**

At MAWP, climb to 3000' via 182DEG course to MATWP, then 145DEG course to MKE and hold. Contact CHITOSE APP >

(for using VOR/DME)

At MAWP, climb to 3000' on HDG 182DEG to intercept and proceed via NMKE R-325 to MKE VOR/DME and hold. Contact CHITOSE APP.



**MINIMA**

FIELD ELEV 70ft  
THR ELEV 77ft

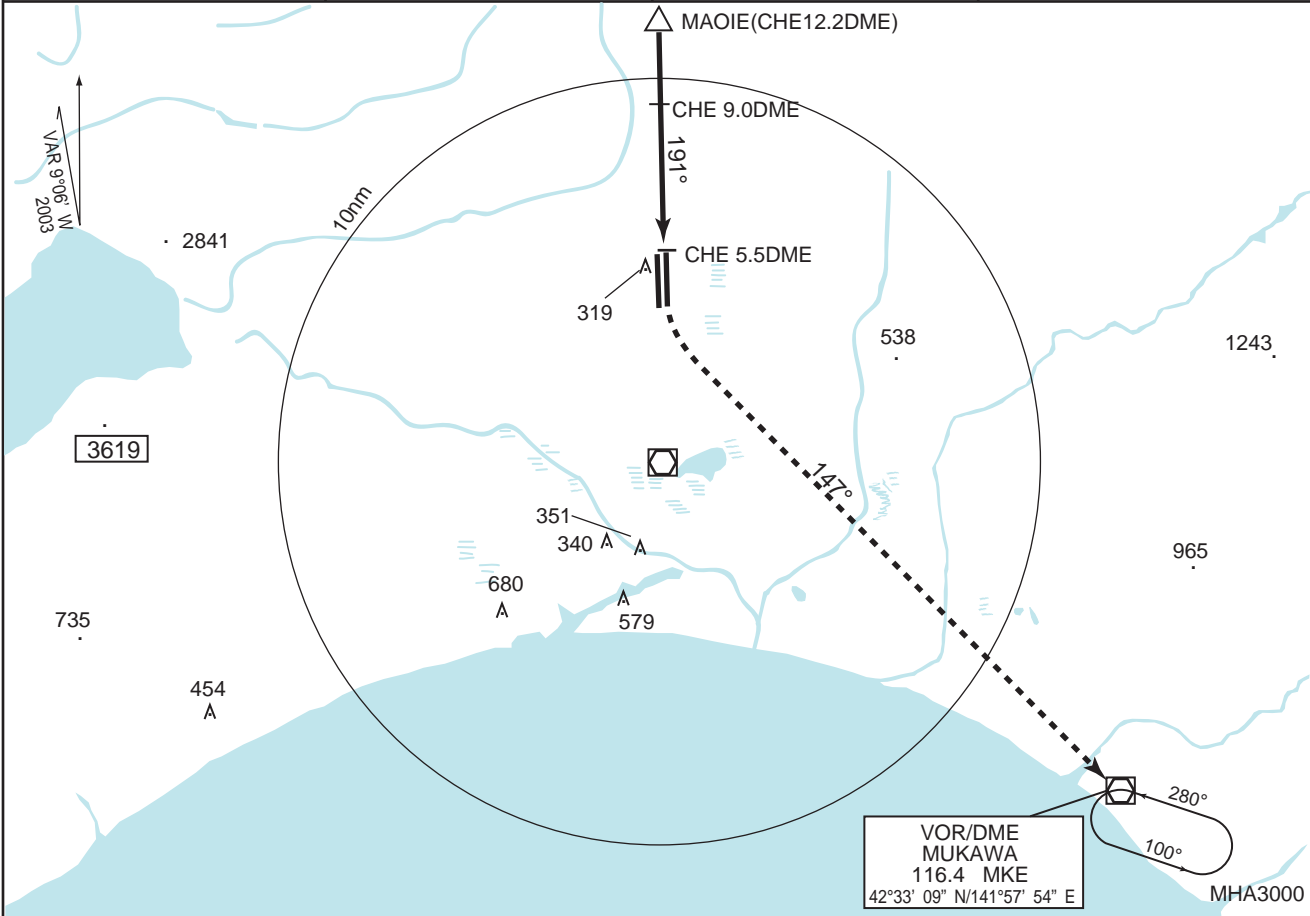
	STA TO RWY 19L LNAV MDA 500'			CIRCLING* MDA-VIS
	SALS & ALB AVBL	SALS ONLY AVBL	SALS OUT	
A				620' -1600m
B	VIS 1400m	VIS 1400m	VIS 1600m	
C				620' -2400m
D	VIS 1800m	VIS 2000m	VIS 2300m	620' -3200m

\*Circling to East side of RWY only

RJCC

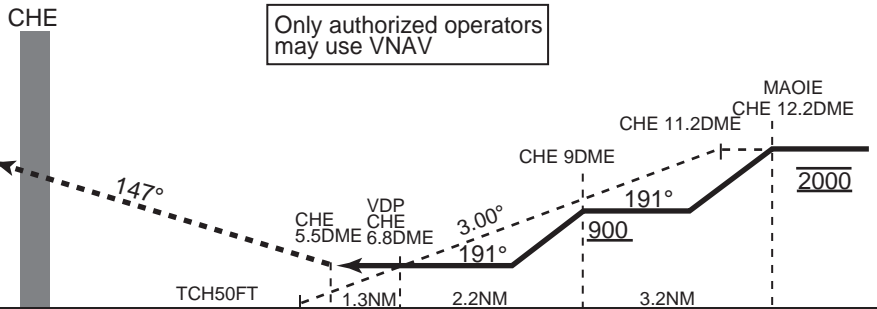
NEW CHITOSE VOR/DME NR.2 RWY 19L

CHITOSE APP 120.1 - 124.7	CHITOSE VOR/DME 116.9 CHE 42°41' 51" N/141°41' 22" E	CHITOSE TOWER 118.8 - 126.2 - 121.6G	RADAR AVAILABLE ATIS 128.6
------------------------------	--	---	-------------------------------



**MISSED APPROACH**

At 5.5DME prior to CHE VOR/DME(or da), turn left climb via MKE R-327 to 5000' , proceed to MKE VOR/DME and hold. Contact CHITOSE APP.

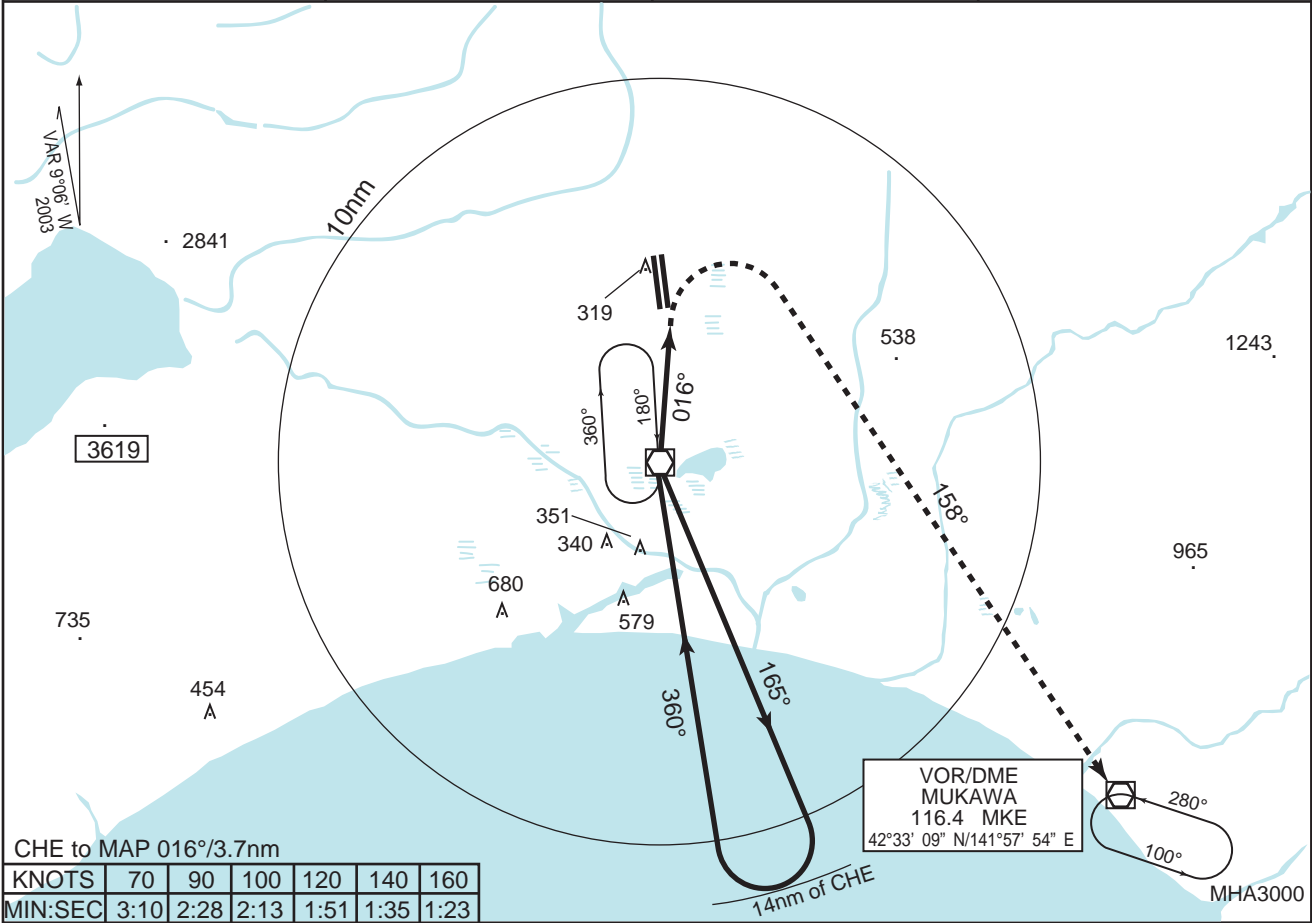


MINIMA	FIELD ELEV 70ft
--------	-----------------

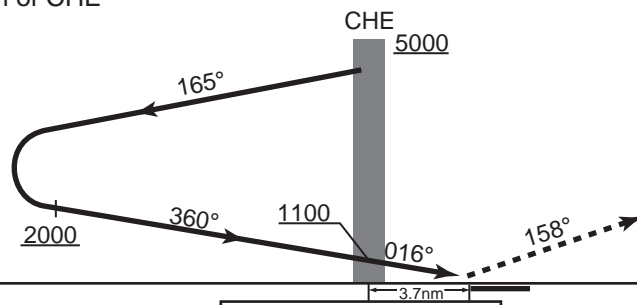
	STA TO RWY 19L			CIRCLING*
	MDA 620' (DA620' when using VNAV)			
	SALS & ALB AVBL	SALS ONLY AVBL	SALS & ALB OUT	MDA-VIS
A	VIS 1400m	VIS 1400m	VIS 1600m	620' -1600m
B			VIS 1700m	620' -1700m
C	VIS 1700m	VIS 1900m	VIS 2200m	620' -2400m
D	VIS 2500m	VIS 2700m	VIS 3000m	620' -3200m

\*Circling to East side of RWY only

CHITOSE APP 120.1 - 124.7	CHITOSE VOR/DME 116.9 CHE 42°41' 51" N/141°41' 22" E	CHITOSE TOWER 118.8 - 126.2 - 121.6G	RADAR AVAILABLE ATIS 128.6
------------------------------	--	---	-------------------------------



Remain within 14nm of CHE



**MISSED APPROACH**  
At 3.7nm after passing CHE VOR, turn right climb via MKE R-338 to 5000' , proceed to MKE VOR/DME and hold.  
Contact CHITOSE APP.

MINIMA	FIELD ELEV 70ft
--------	-----------------

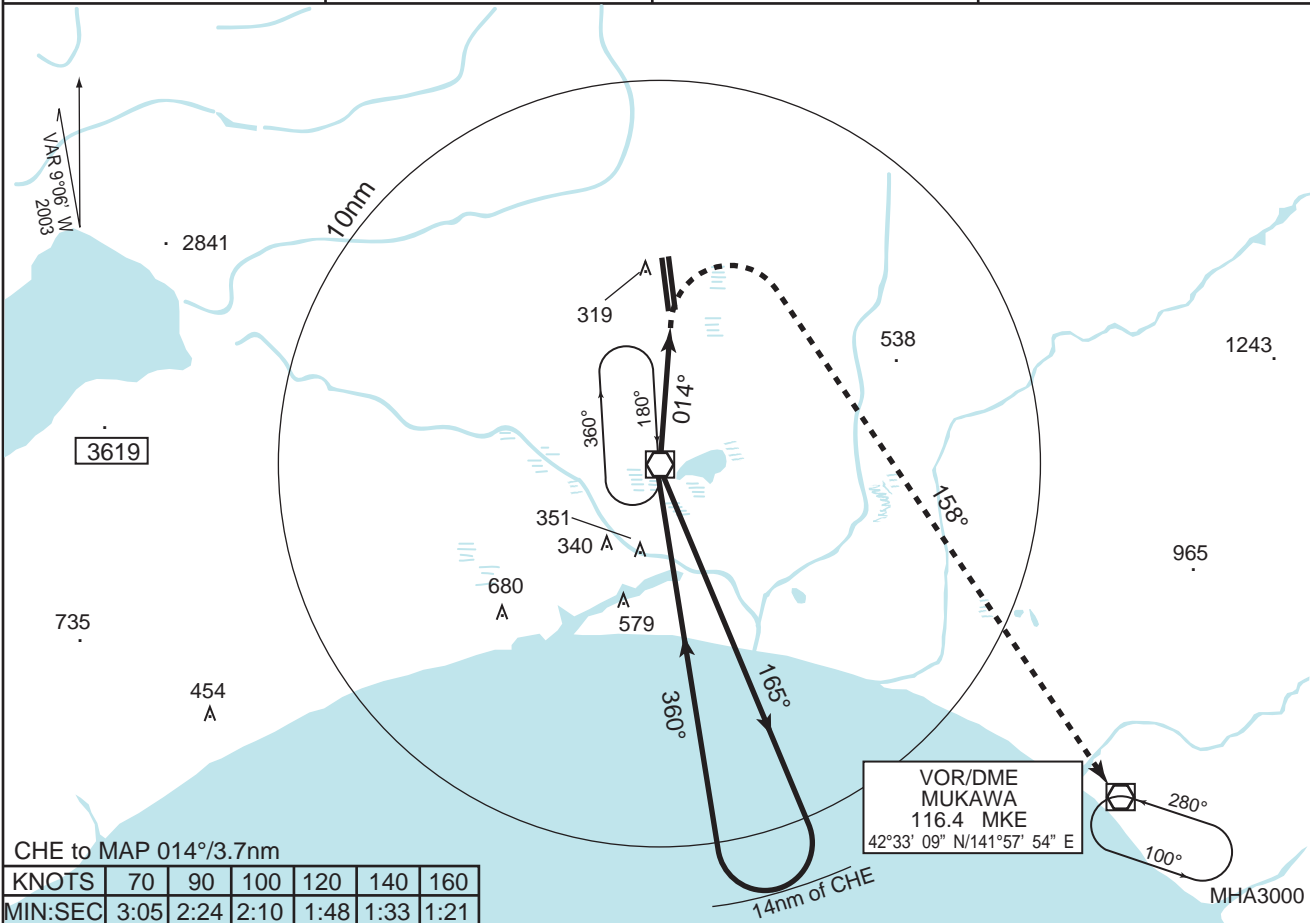
	STA TO RWY 01R MDA 600'		CIRCLING* MDA-VIS
	PALS AVBL	PALS OUT	
A	RVR 1200m VIS 1200m	RVR 1600m VIS 1600m	600' -1600m
B		VIS 2100m	600' -2400m
C			640' -3200m
D	RVR 1500m VIS 1500m	VIS 2800m	

\*Circling to East side of RWY only

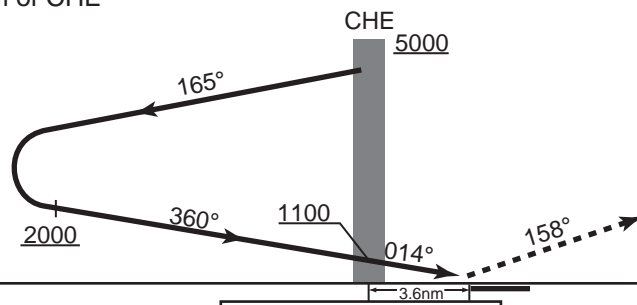
RJCC

NEW CHITOSE VOR RWY 01L

CHITOSE APP 120.1 - 124.7	CHITOSE VOR/DME 116.9 CHE 42°41' 51" N/141°41' 22" E	CHITOSE TOWER 118.8 - 126.2 - 121.6G	RADAR AVAILABLE ATIS 128.6
------------------------------	--	---	-------------------------------



Remain within 14nm of CHE



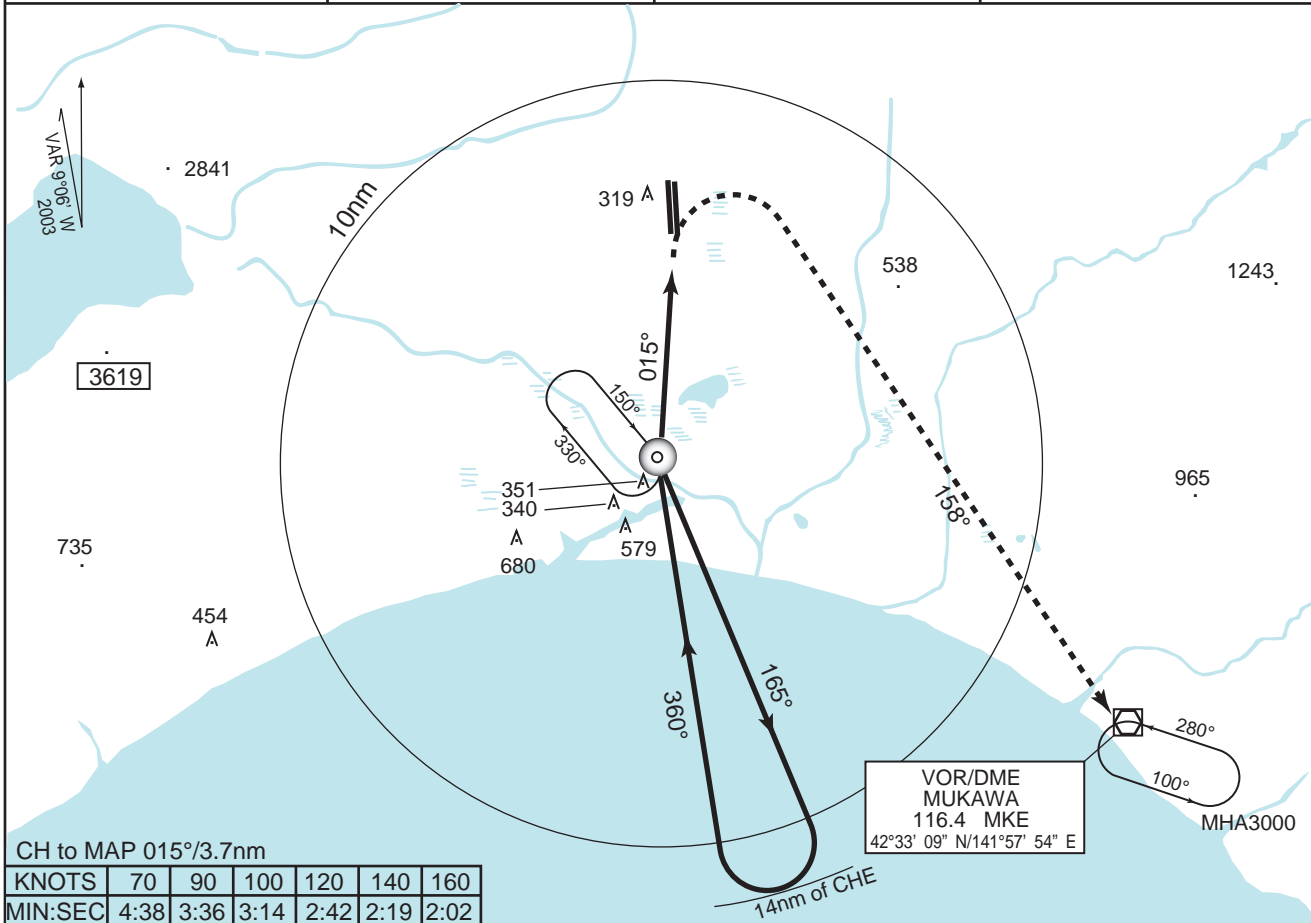
**MISSED APPROACH**  
At 3.6nm after passing CHE VOR, turn right climb via MKE R-338 to 5000' , proceed to MKE VOR/DME and hold.  
Contact CHITOSE APP.

MINIMA	FIELD ELEV 70ft
--------	-----------------

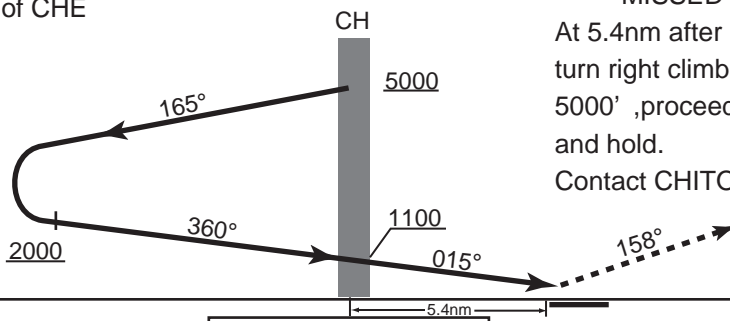
	STA TO RWY 01L MDA 580'		CIRCLING* MDA-VIS
	PALS AVBL	PALS OUT	
A	RVR 1200m VIS 1200m	RVR 1600m VIS 1600m	580' -1600m
B		VIS 2000m	580' -2400m
C	RVR 1400m VIS 1400m	VIS 2700m	640' -3200m

\*Circling to East side of RWY only

CHITOSE APP 120.1 - 124.7	CHITOSE NDB 347 CH 42°40' 04" N/141°41' 08" E	CHITOSE TOWER 118.8 - 126.2 - 121.6G	RADAR AVAILABLE ATIS 128.6
------------------------------	---	---	-------------------------------



Remain within 14nm of CHE



**MISSED APPROACH**  
At 5.4nm after passing CH NDB, turn right climb via MKE R-338 to 5000', proceed to MKE VOR/DME and hold.  
Contact CHITOSE APP.

MINIMA	FIELD ELEV 70ft
--------	-----------------

	STA TO RWY 01L MDA 580'		CIRCLING* MDA-VIS
	PALS AVBL	PALS OUT	
A	RVR 1400m VIS 1400m	RVR 1600m VIS 1600m	580' -1600m
B		VIS 2000m	580' -2400m
C	RVR 1600m VIS 1600m	VIS 2700m	640' -3200m

\*Circling to East side of RWY only

**YUKII WEST ARRIVAL**

From over NASEL, via CHE R-210(NEVER, via CHE R-201) to intercept and proceed via MKE R-240 to YUKII (for RWY 01L) / YOKOH (for RWY 01R).  
cross YUKII/YOKOH at or above 3,000FT.

ILS NR.1 RWY 01L      via ICN-LLZ to TENSI.  
Cross ICN 15DME at 2,000FT,cross TENSI at2,000FT.

ILS NR.2 RWY 01L      via ICN-LLZ to MIREI.  
Cross MIREI at 3,000FT.

ILS NR.3 RWY 01R      via ICH-LLZ to YOSEI.  
Cross ICH 15DME at 2,000FT.cross YOSEI at 2,000FT.

ILS NR.4 RWY 01R      via ICH-LLZ to YODAI.  
Cross YODAI at 3,000FT.

**YUKII EAST ARRIVAL**

From over MKE VOR/DME, via MKE R-180 to 8DME turn right, via HDG 270DEG to intercept and proceed via ICN-LLZ to YUKII (for RWY 01L) /YOKOH (for RWY 01R).  
Cross YUKII/YOKOH at or above 3,000FT.

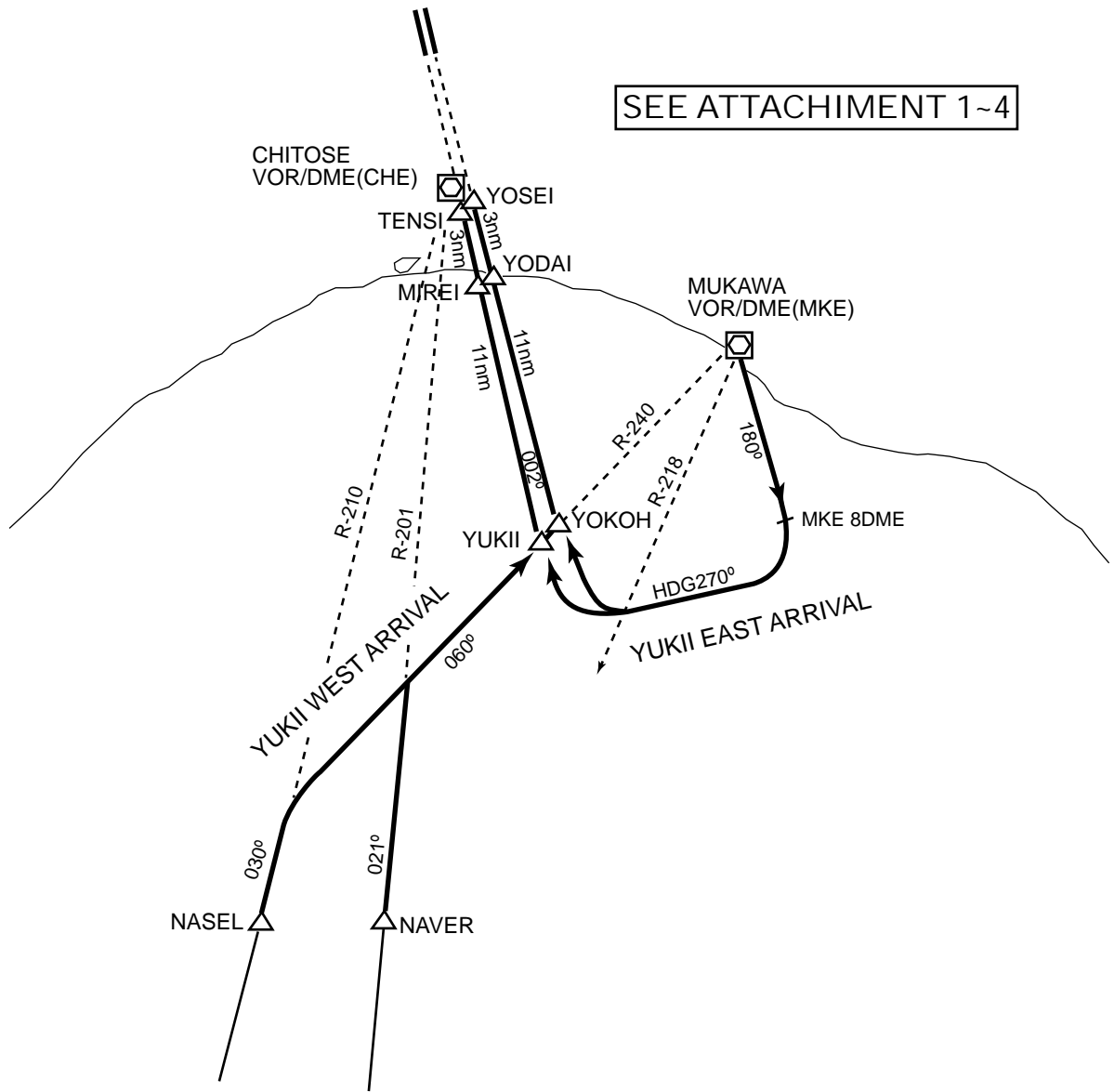
ILS RWY NR.1 01L      via ICN-LLZ to TENSI.  
Cross ICN 15DME at 2,000FT,cross TENSI at2,000FT.

ILS NR.2 RWY 01L      via ICN-LLZ to MIREI.  
Cross MIREI at 3,000FT.

ILS NR.3 RWY 01R      via ICH-LLZ to YOSEI.  
Cross ICH 15DME at 2,000FT.cross YOSEI at 2,000FT.

ILS NR.4 RWY 01R      via ICH-LLZ to YODAI.  
Cross YODAI at 3,000FT.

SEE ATTACHMENT 1~4



For ILS NR.1 RWY01L

For ILS NR.3 RWY01R

ATTACHMENT 1

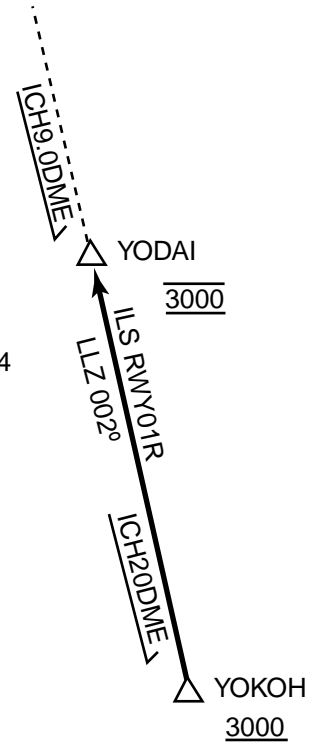
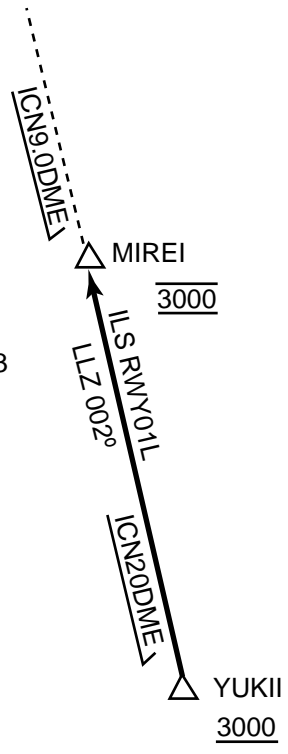
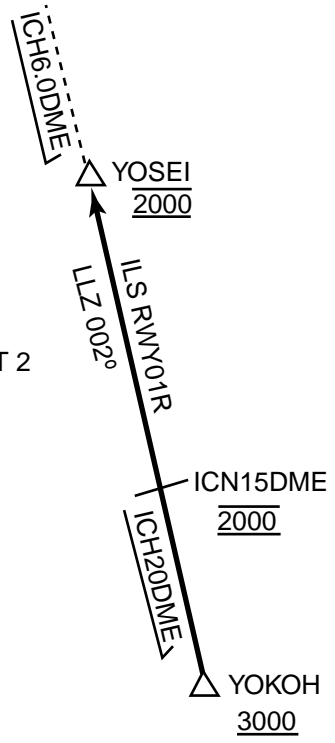
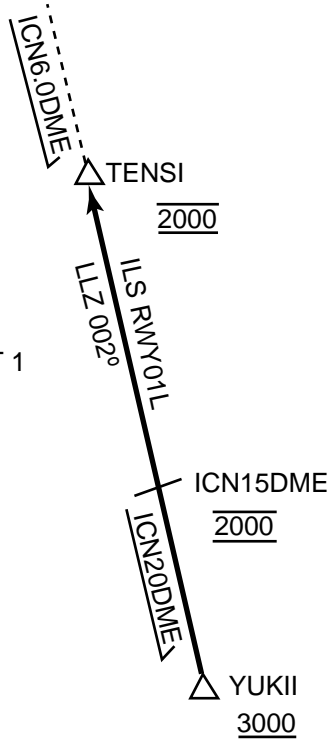
ATTACHMENT 2

For ILS NR.2 RWY01L

For ILS NR.4 RWY01R

ATTACHMENT 3

ATTACHMENT 4





CHITOSE ARRIVAL

From over CHE VOR/DME, CHE R-045 to intercept and proceed via MKE R-360 to 30DME, turn left,...

Cross MKE R-360/25DME at or below 7,000FT, cross MKE R-360/30DME at or above 5,000FT.

(ILS NR.5 RWY19R) ...proceed via 240DEG to NA NDB, via ICS-LLZ to LOVER.

Cross NA NDB at or above 3,000FT, cross WHITE at 2,000FT, cross LOVER at 2,000FT.

(ILS NR.6 RWY19R) ...proceed via 240DEG to NA NDB, via ICS-LLZ to WHITE.

Cross NA NDB at or above 3,000FT, cross WHITE at 3,000FT.

(VOR/DME NR.2 RWY19L) ...proceed via 240DEG to NA NDB to SHINE, via CHE R-011. to MAOIE.

Cross SHINE at or above 3,000FT, cross MAOIE at 2,000FT.

(RNAV(GPS)RWY19L) ...proceed via 240DEG to NA NDB to SHINE.

Cross SHINE at or above 3,000FT.

NASEL ARRIVAL

From over NASEL, via CHE R-210(NAVER, via CHE R-201) to intercept and proceed via MKE R-240 to MKE VOR/DME, via MKE R-360 to 30DME, turn left,...

Cross MKE R-360/13DME at or above 12,000FT cross MKE R-360/25DME at or below 7,000FT, cross MKE R-360/30DME at or above 5,000FT.

(ILS NR.5 RWY19R) ...proceed via 240DEG to NA NDB, via ICS-LLZ to LOVER.

Cross NA NDB at or above 3,000FT, cross WHITE at 2,000FT, cross LOVER at 2,000FT.

(ILS NR.6 RWY19R) ...proceed via 240DEG to NA NDB, via ICS-LLZ to WHITE.

Cross NA NDB at or above 3,000FT, cross WHITE at 3,000FT.

(VOR/DME NR.2 RWY19L) ...proceed via 240DEG to NA NDB to SHINE, via CHE R-011. to MAOIE.

Cross SHINE at or above 3,000FT, cross MAOIE at 2,000FT.

(RNAV(GPS)RWY19L) ...proceed via 240DEG to NA NDB to SHINE.

Cross SHINE at or above 3,000FT.

KURIS ARRIVAL

From over KURIS, via CHE R-011 to SHINE(for RWY19L), or from over HOROM, via 240DEG to NA NDB(for RWY19R).

Cross SHINE at or above 3,000FT, cross NA NDB at or above 3,000FT.

(ILS NR.5RWY19R) via ICS-LLZ to LOVER.

Cross WHITE at 2,000FT, cross LOVER at 2,000FT.

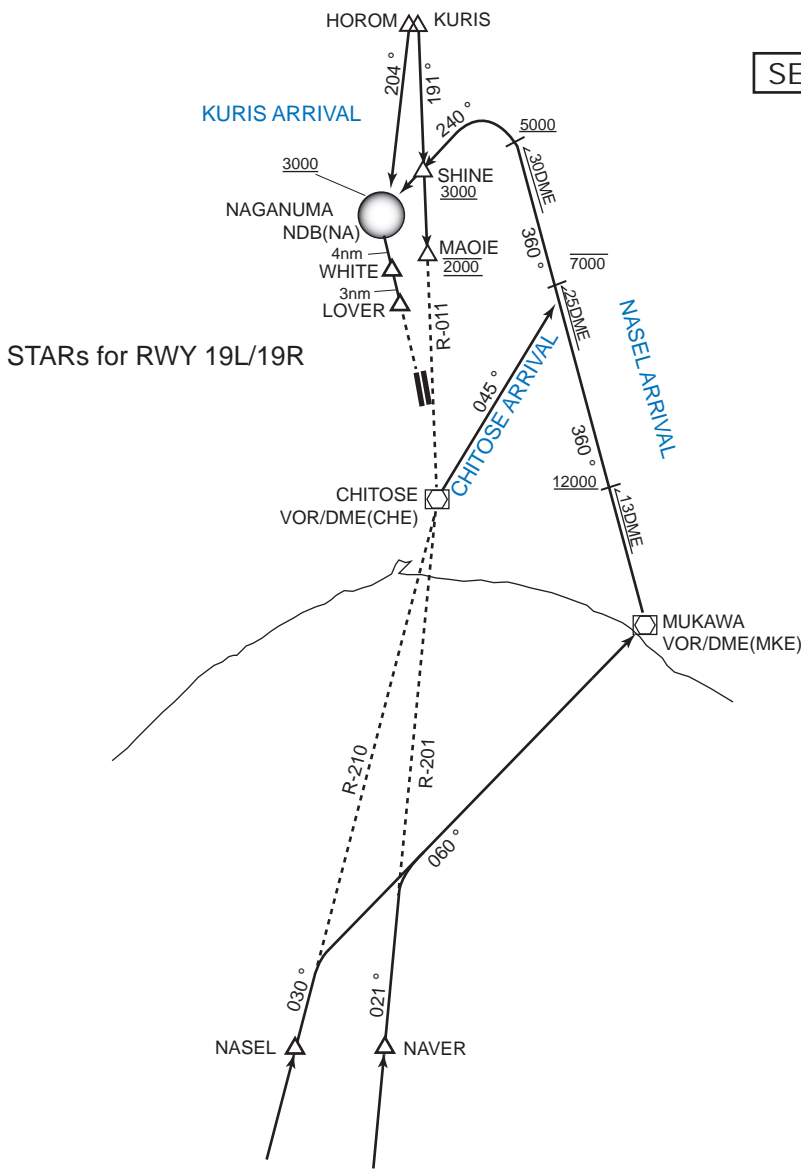
(ILS NR.6 RWY19R) via ICS-LLZ to WHITE.

Cross WHITE at 3,000FT.

(VOR/DME NR.2 RWY19L) via CHE R-011 to MOIE.

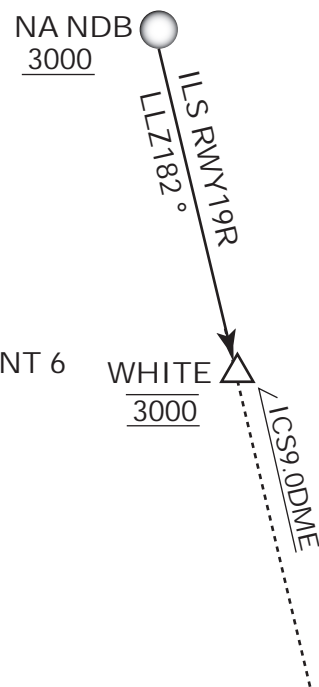
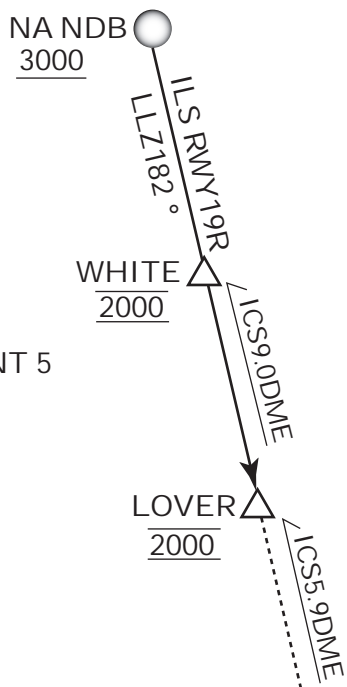
Cross MAOIE at 2,000FT.

SEE ATTACHMENT 5,6



For ILS NR.5 RWY19R

For ILS NR.6 RWY19R



ATTACHMENT 5

ATTACHMENT 6

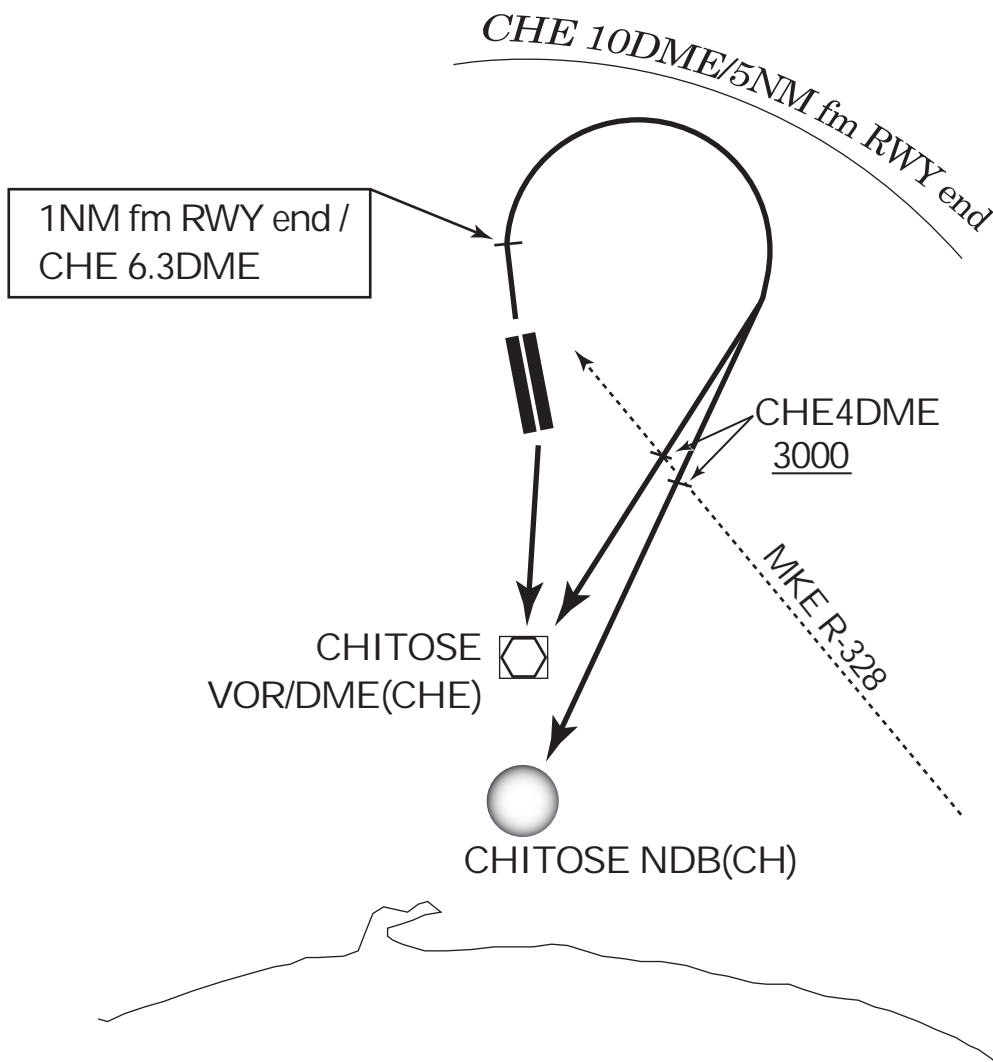
CHITOSE THREE DEPARTURE

RWY 01L/01R: Climb via RWY HDG until 1NM from RWY end/CHE 6.3DME, turn right, proceed to CHE VOR/DME (CH NDB) within CHE 10DME (5NM from RWY end).

Cross 4DME prior to CHE VOR/DME (MKE R-328) at or above 3,000FT.

RWY 19R/19L: Climb direct to CHE VOR/DME (CH NDB).

CHITOSE THREE DEPARTURE

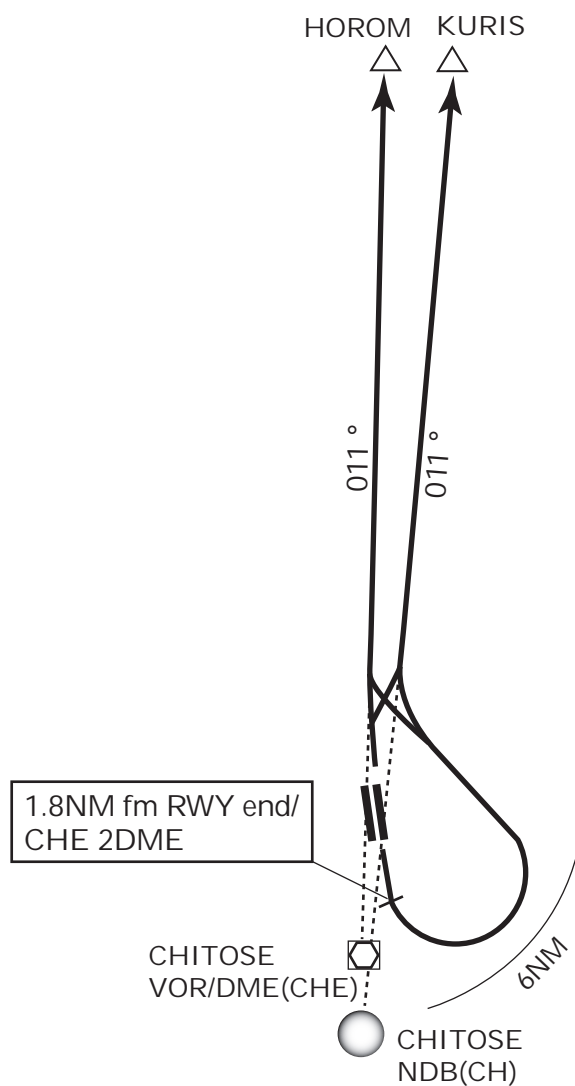


## KURIS SIX DEPARTURE

RWY 01L/01R: ....

RWY 19R/19L: Climb via RWY HDG until 1.8NM from RWY end/CHE  
2.0DME turn left within 6NM,....  
...climb via CHE R-011 to KURIS (011DEG from CH NDB to  
HOROM).

## KURIS SIX DEPARTURE



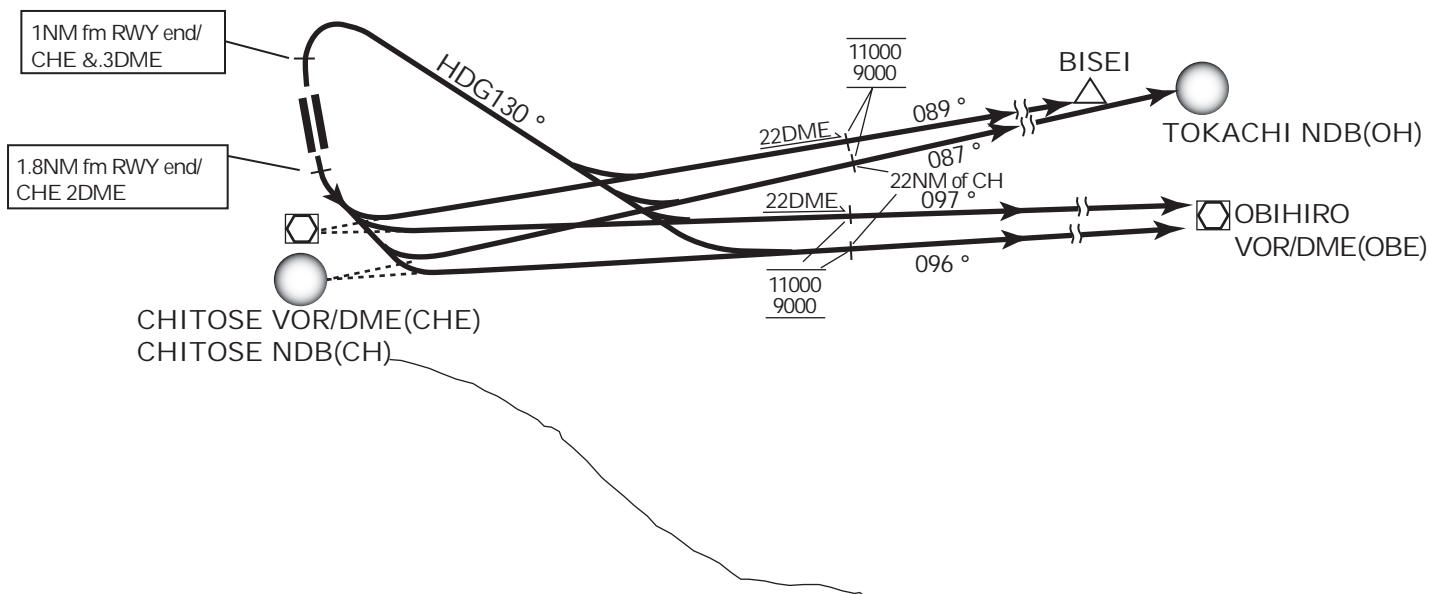
TOKACHI SEVEN DEPARTUE

RWY 01L/01R: Climb via RWY HDG until 1NM from RWY end/ CHE 6.3DME, turn right, climb via HDG 130 DEG to intercept and proceed via,...

RWY 19R/19L: Climb via RWY HDG until 1.8NM from RWY end/ CHE 2.0DME, turn left, climb via, ...CHE R-089 to BISEI(087DEG from CH NDB to OH NDB) or CHE R-097 (096DEG from CH NDB) to OBE VOR/DME. Cross CHE R-089/22DME or CHE R-097/22DME (22NM east of CH NDB) between 9,000FT and 11,000FT.

Note: Aircraft use CH NDB shall inform ATC about that for flight restriction.

TOKACHI SEVEN DEPARTURE

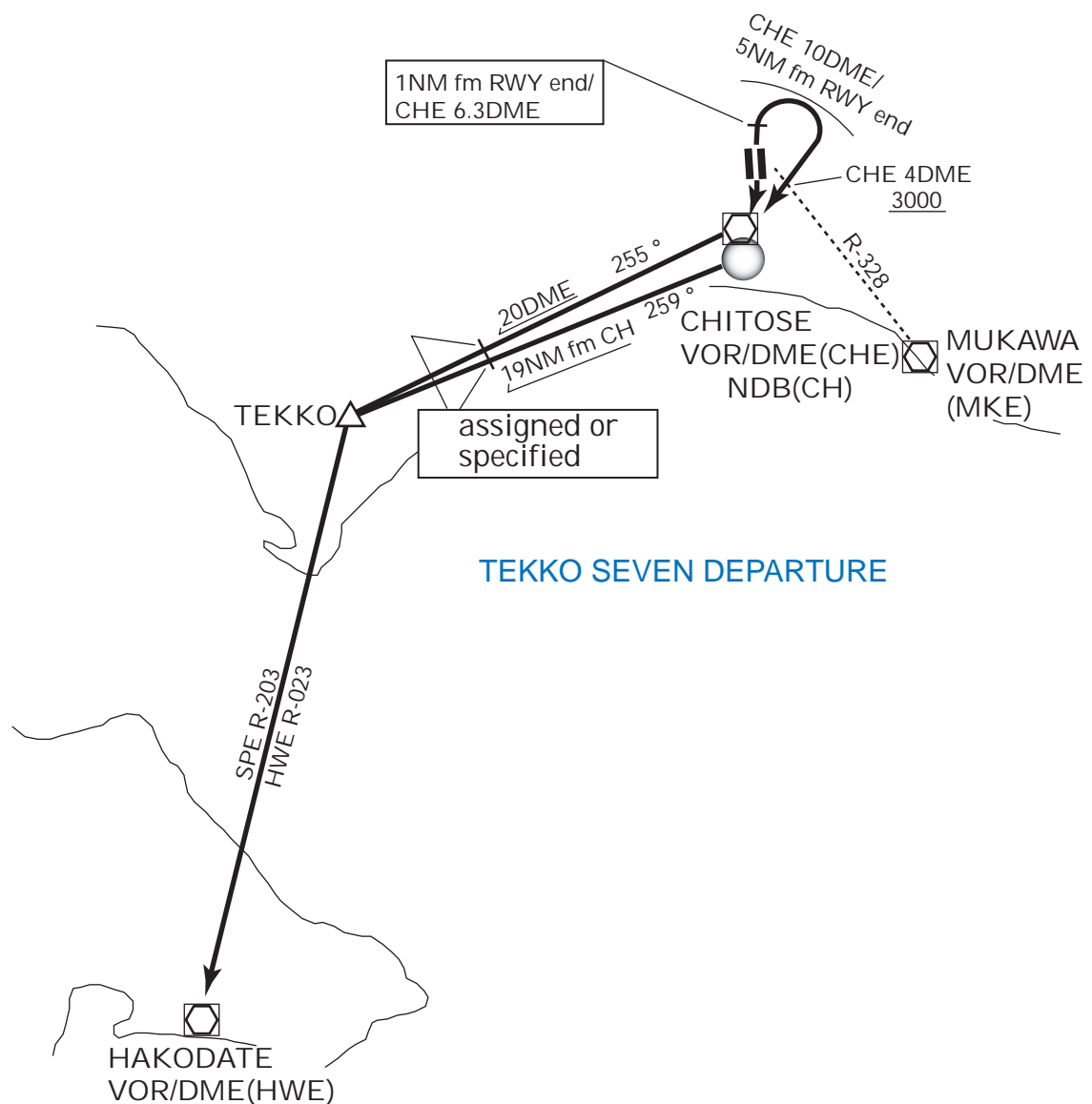


TEKKO SEVEN DEPARTURE

RWY 01L/01R : Climb via RWY HDG until 1NM from RWY end and /CHE 6.3DME, turn right, proceed to CHE VOR/DME (CH NDB) within CHE 10DME (5NM from RWY end), cross 4DME prior to CHE VOR/DME (MKE R-328) at or above 3,000FT,...

RWY 19R/19L : Climb direct to CHE VOR/DME (CH NDB),...  
 ...turn right, via CHE R-255 (259 DEG from CH NDB) to TEKKO, then via SPE R-203/HWE R-023 to HWE VOR/DME.  
 Cross CHE R-255/20DME (19NM west of CH NDB) at assigned or specified altitude.

Note: Aircraft unable to comply with the freight restriction, inform ATC for alternate procedure before departure.



MUKAWA SEVEN DEPARTURE

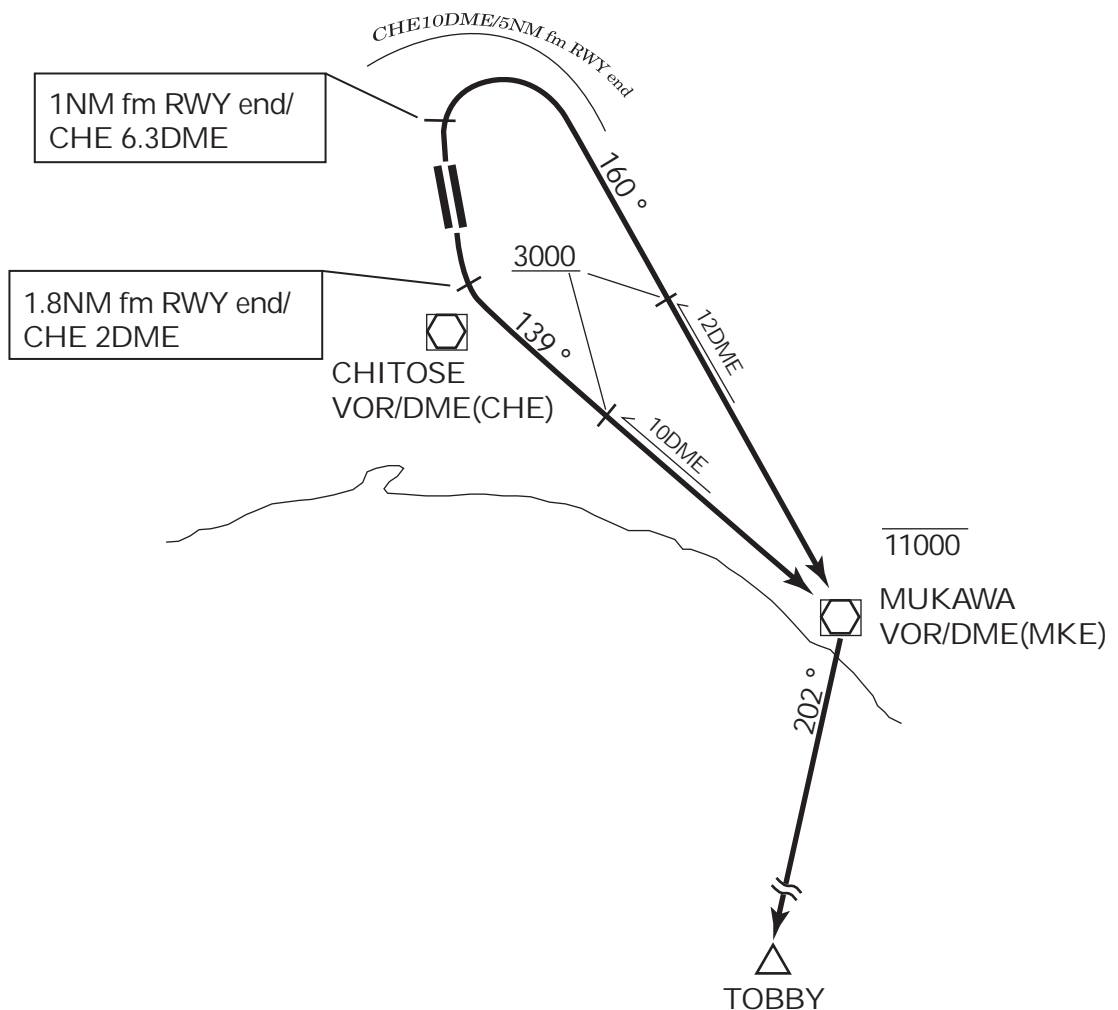
RWY 01L/01R: Climb via RWY HDG until 1NM from RWY end/CHE 6.3DME  
 6.3DME, turn right within CHE 10DME(5NM from RWY end).  
 climb via MKE R-340 to MKE VOR/DME, then via MKE R-202 to  
 TOBBY.

Cross MKE R-340/12DME at or above 3,000FT, cross MKE  
 VOR/DME at or below 11,000FT.

RWY 19R/19L :Climb via RWY HDG until 1.8NM from RWY end/CHE 2.0DME,  
 turn left, climb via MKE R-319 to MKE VOR/DME,  
 then via MKE R-202 to TOBBY.

Cross MKE R-319/10DME at or above 3,000FT, cross MKE  
 VOR/DME at or below 11,000FT.

MUKAWA SEVEN DEPARTURE



TOBBY SIX DEPARTURE

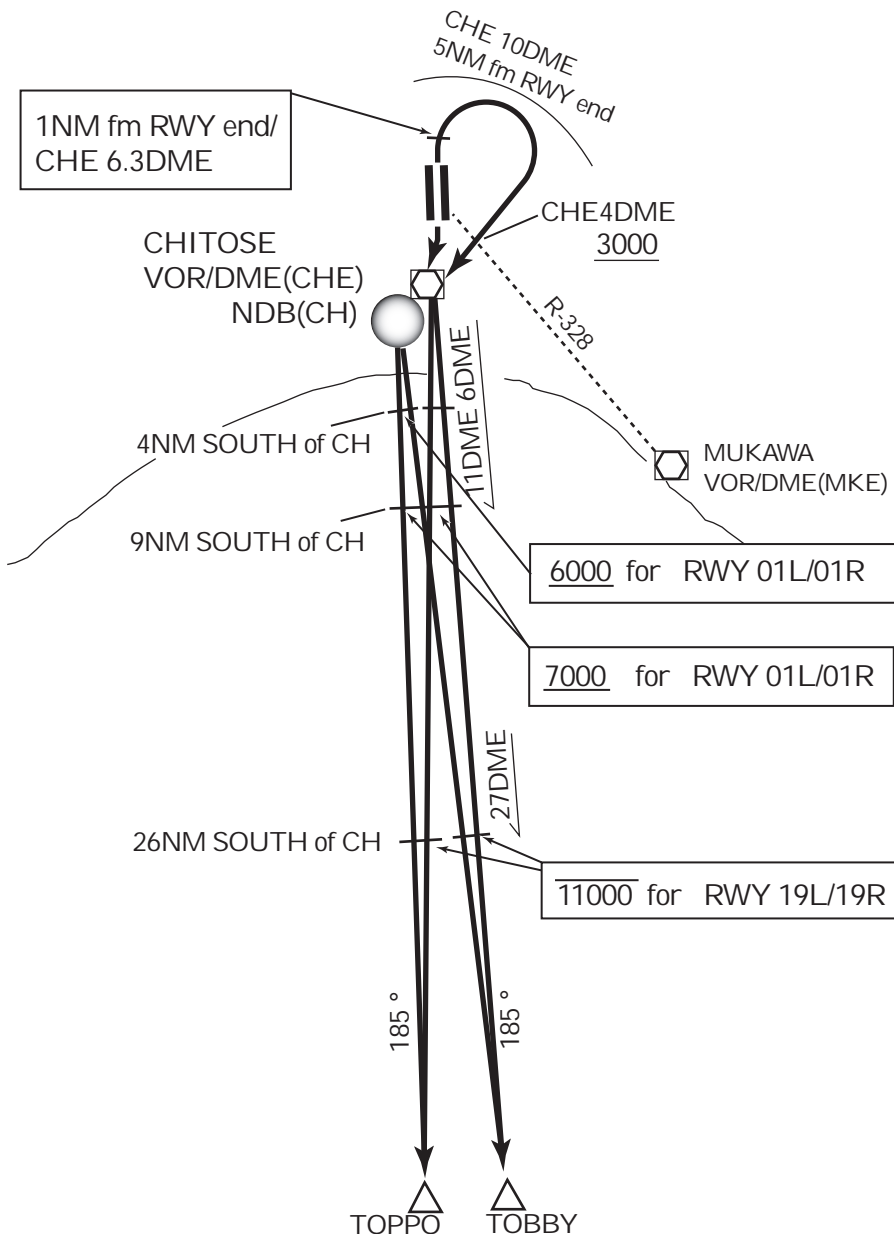
RWY 01L/01R : Climb via RWY HDG until 1NM from RWY end /CHE 6.3DME, turn right, proceed to CHE VOR/DME (CH NDB) within CHE 10DME (5NM from RWY end), thrn via CHE R-185 (185 DEG from CH NDB) to TOBBY or TOPPO.

Cross 4DME prior to CHE VOR/DME (MKE R-328) at or above 3,000FT, cross CHE R-185/6DME (4NM south of CH NDB) at or above 6,000FT, cross CHE R-185/11DME (9NM south of CH NDB) at or above 7,000FT.

RWY 19R/19L : Climb direct to CHE VOR/DME (CH NDB), then via CHE R-185 (185DEG from CH NDB) to TOBBY or TOPPO, Cross CHE R-185/27DME (26NM south of CH NDB) at or below 11,000FT.

Note : Air craft unable to comply with the flight restriction, inform ATC for altrenate procedure befor departure.

TOBBY SIX DEPARTURE

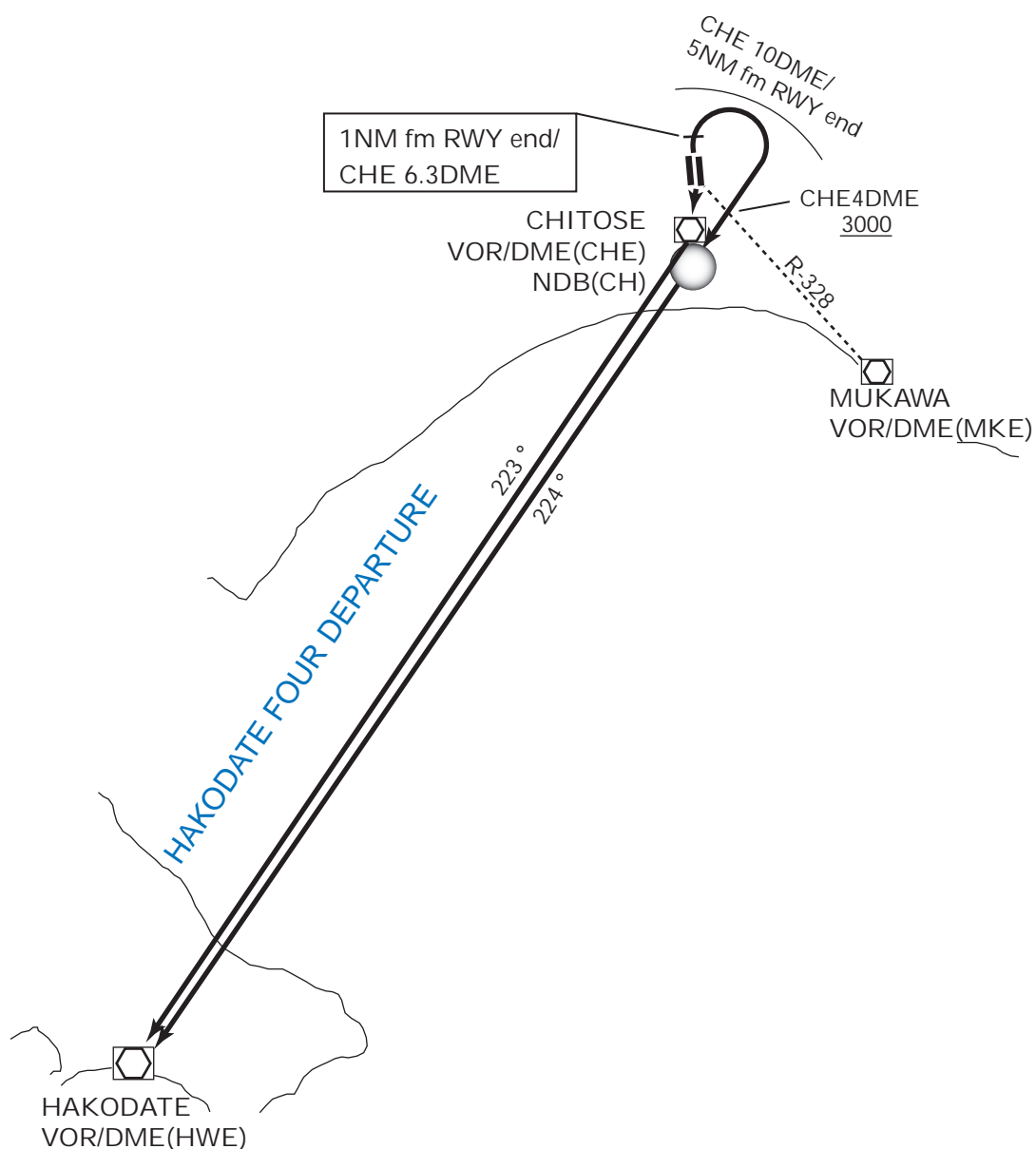




## HAKODATE FOUR DEPARTURE

RWY 01L/01R: Climb via RWY HDG until 1NM from RWY end/CHE 6.3DME, turn right, proceed to CHE VOR/DME (CH NDB) within CHE 10DME (5NM from RWY end), cross 4DME prior to CHE VOR/DME (MKE R-328) at or above 3,000FT,...

RWY 19R/19L: Climb direct to CHE VOR/DME (CH NDB),...  
...then via CHE R-223 (224 DEG from CH NDB) to HWE VOR/DME.

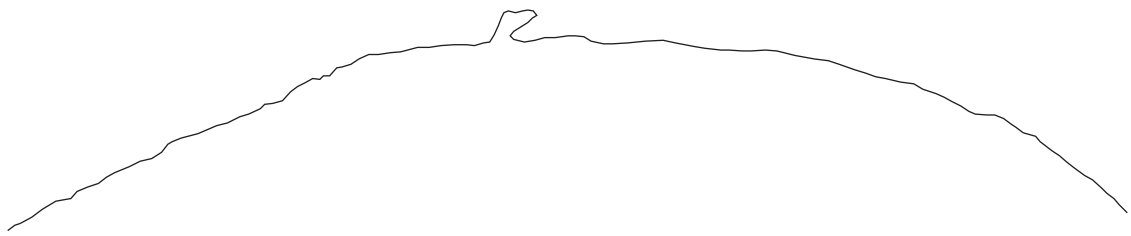
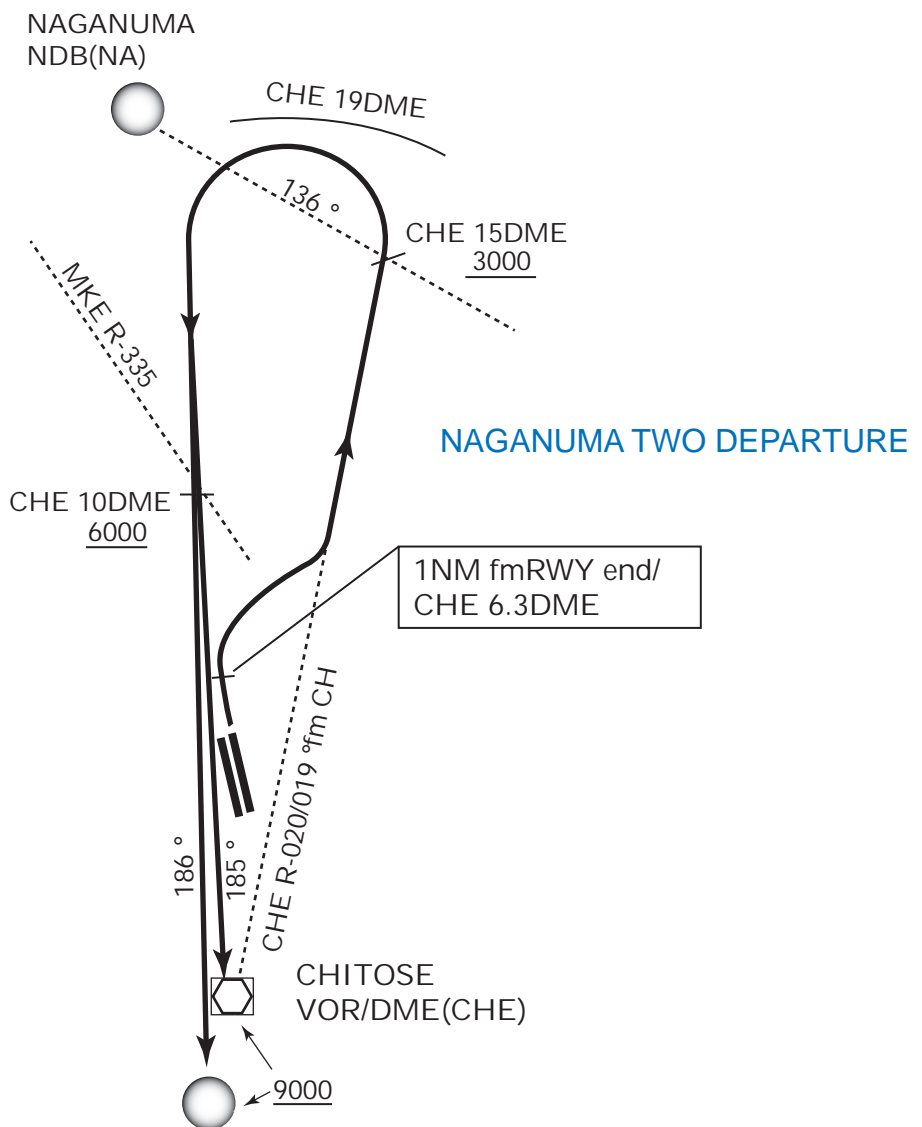


**NAGANUMA TWO DEPARTURE**

RWY 01L/01R : Climb via RWY HDG until 1NM from RWY end/CHE 6.3DME, turn right to intercept and proceed via CHE R-029 (019 DEG from CH NDB) to CHE 15DME (136 DEG from NA NDB), then turn left to intercept and proceed via CHE R-005 (186DEG to CH NDB) to CHE VOR/DME (CH NDB) within CHE 19DME (089 DEG from NA NDB).

Cross CHE R-020/15DME (136 DEG from NA NDB) at or above 3,000FT, cross CHE R-005/10DME (MKE R-335) at or above 6,000FT, cross CHE VOR/DME (CH NDB) at or above 9,000FT.

RWY 19R/19L : Not established.

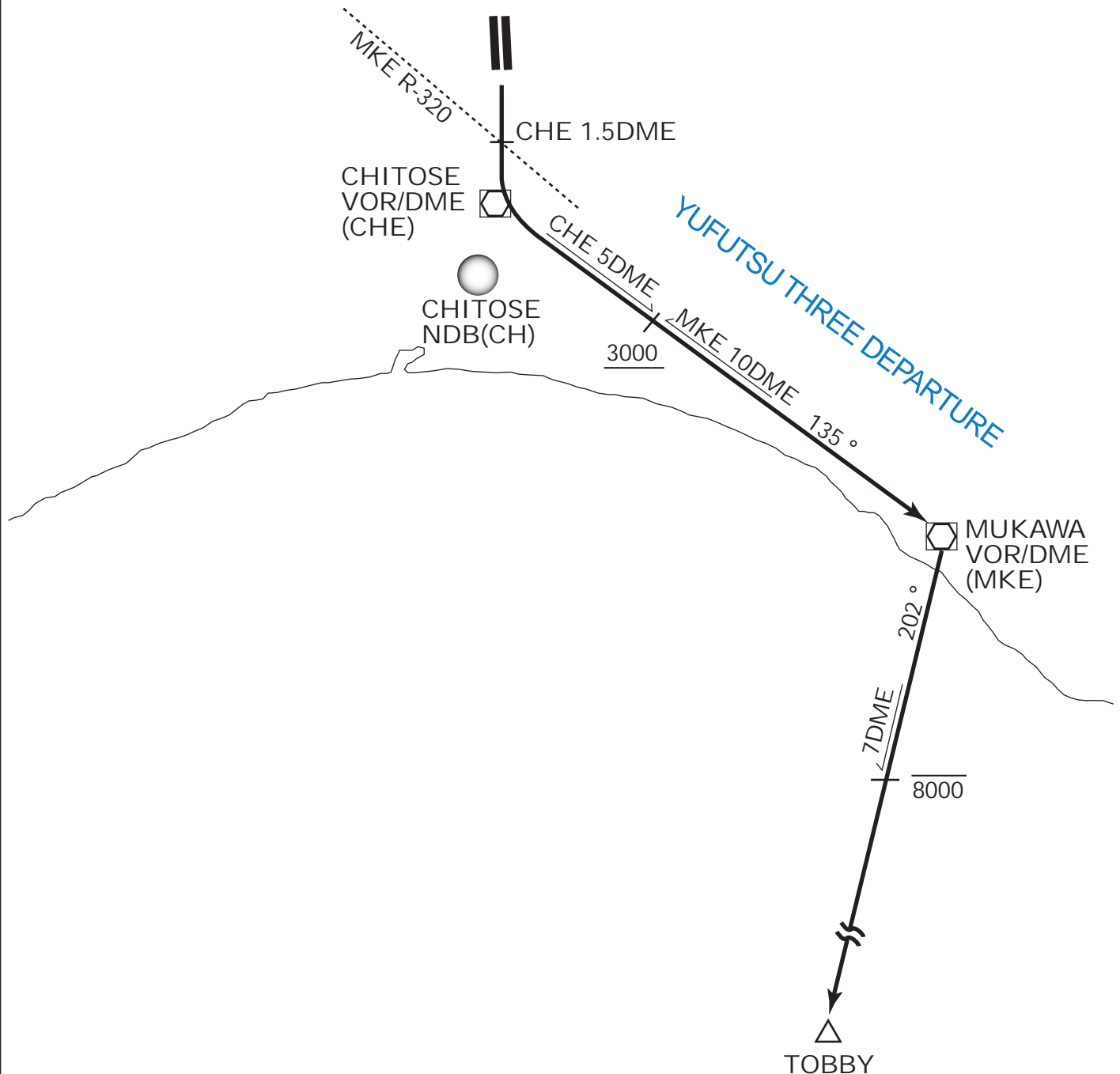


## YUFUTSU THREE DEPARTURE

RWY 01L/01R: Not established.

RWY 19R/19L: Climb direct to CHE VOR/DME (CH NDB) until 1.5DME prior to CHE VOR/DME (until crossing MKE R-320), turn left to intercept and proceed via CHE R-135 (MKE R-315) to MKE VOR/DME or after MKE VOR/DME, via MKE R-202 to TOBBY.

Cross CHE R-135/5DME (MKE R-315/10DME) at or above 3,000FT, cross MKE R-202/7DME at or below 8,000FT.



HOKUTO THREE DEPARTURE

RWY 01L/01R: Climb via RWY HDG until 1NM from RWY end/CHE 6.3DME, turn right to intercept and proceed via CHE R-020 (020 DEG from CH NDB), then via MKE R-352 to KURIS (HOROM). Cross CHE R-020/15DME (136DEG from NA NDB) at or above 3,000FT, cross KURIS (HOROM) at or above 7,000FT.

RWY 19R/19L: Climb direct to CHE VOR/DME (CH NDB) until 1.5DME prior to CHE VOR/DME (until crossing MKE R-320), turn left to intercept and proceed via CHE R-135 (MKE R-315) to CHE 5DME (MKE 10DME), then turn left to intercept and proceed via MKE R-352 to KURIS (HOROM). Cross CHE R-135/5DME (MKE R-315/10DME) at or above 3,000FT, cross MKE R-352/13DME at or above 5,000FT, cross KURIS (HOROM) at or above 7,000FT.

